

South Texas College
Board of Trustees
Facilities Committee
Ann Richards Administration Building, Board Room
Pecan Campus
Tuesday, January 17, 2017
@ 4:00 PM
McAllen, Texas

“At anytime during the course of this meeting, the Board of Trustees may retire to Executive Session under Texas Government Code 551.071(2) to confer with its legal counsel on any subject matter on this agenda in which the duty of the attorney to the Board of Trustees under the Texas Disciplinary Rules of Professional Conduct of the State Bar of Texas clearly conflicts with Chapter 551 of the Texas Government Code. Further, at anytime during the course of this meeting, the Board of Trustees may retire to Executive Session to deliberate on any subject slated for discussion at this meeting, as may be permitted under one or more of the exceptions to the Open Meetings Act set forth in Title 5, Subtitle A, Chapter 551, Subchapter D of the Texas Government Code.”

I.	Approval of Facilities Committee Meetings Minutes.....	1-11
	1. December 6, 2016 Facilities Committee Meeting	
II.	Update on Status of the 2013 Bond Construction Program and Status of Project and Program Accountability.....	12-51
III.	Update on Status of the 2013 Bond Construction Pecan Campus Thermal Plant ..	52
IV.	Update on Status of the 2013 Bond Construction Regional Center for Public Safety Excellence Projects	53
V.	Review and Recommend Action on Revised Schematic Design for the 2013 Bond Construction Regional Center for Public Safety Excellence Parking and Site Improvements.....	54-59
VI.	Review and Recommend Action on Substantial Completion for the 2013 Bond Construction Pecan Campus Thermal Plant.....	60-61
VII.	Review and Recommend Action on Substantial Completion for the Pecan Campus Building K Student Enrollment Center	62
VIII.	Review and Recommend Action on Lease Agreement with La Joya Independent School District for the 2013 Bond Construction La Joya Jimmy Carter High School Teaching Center	63-64
IX.	Review and Recommend Action on Renewal of Facility Lease Agreements	65-66
X.	Review and Discussion of Proposed Gun Free Zones.....	67-75
XI.	Update on Status of Non-Bond Construction Projects	76-80

Approval of Facilities Committee Meetings Minutes

The following Minutes for the Facilities Committee meetings are presented for Committee approval.

1. December 6, 2016 Facilities Committee Meeting

Meeting Minutes
Facilities Committee Meeting
December 6, 2016

**South Texas College
Board of Trustees
Facilities Committee
Ann Richards Administration Building, Board Room
Pecan Campus, McAllen, Texas
Tuesday, December 6, 2016 @ 4:00 PM**

MINUTES

The Facilities Committee Meeting was held on Tuesday, December 6, 2016 in the Ann Richards Administration Building Board Room at the Pecan Campus in McAllen, Texas. The meeting commenced at 4:16 p.m. with Mr. Gary Gurwitz presiding.

Members present: Mr. Gary Gurwitz, Dr. Alejo Salinas, Jr., Mrs. Graciela Farias, Mr. Jesse Villarreal, Ms. Rose Benavidez, and Mr. Paul R. Rodriguez

Members absent: Mr. Roy de León

Also present: Dr. Shirley A. Reed, Mr. Chuy Ramirez, Mrs. Mary Elizondo, Mr. Ricardo de la Garza, Mr. George McCaleb, Mr. Paul Varville, Mr. Cody Gregg, Mr. David Valdez, Mr. Sam Saldana, Mr. Brian Fruge, Mr. Gilbert Gallegos, Mr. Rolando Garcia, Ms. Diana Bravos, Ms. Tammy Tijerina, Mr. Hector Garcia, Mr. Scott Adams, Mr. Mario Reyna, Jr., Ms. Hilda Perez Garcia, Mr. Ramiro Gutierrez, and Mr. Andrew Fish

Approval of Facilities Committee Meetings Minutes

Upon a motion by Dr. Alejo Salinas, Jr. and a second by Mr. Jesse Villarreal, the following Minutes for the Facilities Committee meetings were approved as written:

1. November 8, 2016 Facilities Committee Meeting
2. November 22, 2016 Facilities Committee Meeting

The motion carried.

**Update on Status of the 2013 Bond Construction Program and Status of Project
and Program Accountability**

Broaddus & Associates provided the following documents on the current status of the 2013 Bond Construction program.

- Update on the status of the 2013 Bond Construction Program;
- Video Update on Construction Projects;
- Chart of Project Progress; and
- Project Scorecards

Broaddus & Associates also updated the following accountability reports and highlighted all changes to the budget in yellow:

- Program Budget Summary worksheet;
- Construction Budget worksheet;

In addition, the College administration updated the following documents to reflect the 2013 Bond Construction Program budget shortfalls:

- Non-Bond Commitments and Expenditures worksheet
- Tracking Contingency Log

As of December 1, 2016, the total budget shortfall was estimated to be at \$4,668,382 with the use of buyout savings and design and construction contingency.

Budget Deficit Shortfall

Brian Fruge, with Broaddus & Associates, noted that the Budget Deficit Shortfall had been reduced to approximately \$4.6M from its height of over \$7M. He anticipated further reductions to bring the total deficit below the targeted goal of \$4.1 M deficit in the 2013 Bond Construction Program budget.

The Committee noted that in addition to the presentation of buyout savings, which Broaddus & Associates credits for the bulk of this reduction, the Construction Program Manager (CPM) had also reduced the funds allocated for the GMPs for the Starr County Campus and Mid Valley Campus Workforce Training Center projects. While the design of the projects was suspended, the Committee anticipated that the GMPs would come in beyond the CCL, based on the fact that almost every other project under the 2013 Bond Construction Program was over the CCL.

Broaddus & Associates agreed that the projects might come in over GMP, but stated that the projects would be redesigned, and the CPM could not commit to a GMP budget beyond CCL until the design work was resumed.

The Committee agreed. They also noted, however, that the resulting reduction to the program-wide budget deficit specifically from these two projects was over \$3M, and asked what the total Budget Deficit Shortfall had been. With the aforementioned reduction from over \$7M to \$4.6M in deficit, this could all be accounted for simply by the suspension of work on those projects and the removal of their current GMPs from the budget. If this was the case, then almost no savings would have been realized from the buyout savings presented thus far.

Broaddus & Associates was unable to provide a clear analysis of the budget deficit based on the question as posed, and suggested that perhaps the budget deficit had not included the GMP overages of those two projects.

Scope of Projects

The Committee then noted that the Pecan Campus Thermal Plant project had been changed from the Board-approved version, which at the schematic design phase had included an external screen to block the view of the cooling towers.

Broaddus & Associates had researched this issue, and stated that the Board had approved a “poorly documented” change order, and that the approval to remove that external screen was included as a line item within the change order.

Broaddus & Associates was undertaking the process of adding that screen back into the project. When asked about the funding for this, he asserted that the funds would come out of previously approved buyout savings on the project.

The Committee asked whether this would be brought to the Board for approval, and Broaddus & Associates indicated that they intended to resolve the issue without Board action.

The Committee asked whether the funds could come from the project Design Contingency or from the owner-controlled project Construction Contingency, and Broaddus & Associates restated that the funds would come from a reduction to buyout savings.

Funding for any shortfall net of buyout savings and use of design and construction contingency would be covered by non-bond funds.

No action was requested.

Review and Recommend Action on Change Orders for Use of Buyout Savings for the 2013 Bond Construction Program

- 1. Pecan Campus North Academic Building**
- 2. Technology Campus Parking and Site Improvements**

Approval on proposed change orders for use of buyout savings for the 2013 Bond Construction Projects will be requested at the December 13, 2016 Board meeting.

Purpose

The current buyout savings for the 2013 Bond Construction Projects above were reviewed and the proposed savings would be processed by submitting a change order. Buyout savings are realized when actual construction services are contracted at a lower cost than the Board approved Guaranteed Maximum Price (GMP). GMPs include Design and Construction contingency funds based on a percentage of the total construction cost. When buyout savings reduce the total construction costs, the associated contingencies are also reduced from the GMP.

The proposed Change Orders would reduce the overall GMPs due to buyout savings and associated reductions to project level Design and Construction contingencies, and the reduced costs would be transferred to the 2013 Bond Construction Program Contingency fund. Broaddus & Associates was working with D. Wilson Construction Company and E-CON Group, LLC to determine the associated contingency savings, which would be presented at a later date.

Background

As part of the buyout process, D. Wilson Construction Company and E-CON Group, LLC brought forward cost information to allow the acceptance of actual buyout savings for the project. They were as follows:

2013 Bond Construction Buyout Savings

Construction Projects	Buyout Savings
Pecan Campus North Academic	\$720,878
Tech Campus Parking & Site Improvements	400,000
Total Buyout Savings	\$1,120,878

Pecan Campus North Academic Building	Board Approved Date	Approved GMP Amount
Original Total GMP Approved	6/28/16	\$10,951,000
Proposed Deductive Change Order	pending	(720,878)
Revised GMP		\$10,230,122

Tech Campus Parking & Site Improvements	Board Approved Date	Approved GMP Amount
Original Total GMP Approved	6/28/16	\$1,985,820
Previously Approved Deductive Change Order	9/27/16	(22,246)
Revised GMP	9/27/16	\$1,963,574
Current Proposed Deductive Change Order	Pending	(400,000)
Current Revised GMP		\$1,563,574

Broaddus & Associates recommended accepting the buyout savings for a total of \$1,120,878 and approval of change orders to re-allocate the savings to the 2013 Bond Construction Program Contingency.

Staff recommended that Broaddus & Associates provide a regular report on buyout savings and documentation as those savings are reallocated to the 2013 Bond Construction Program Contingency fund, and to assist the College track its overall program budget.

Presenters

Representatives from Broaddus & Associates and D. Wilson Construction Company and E-CON Group, LLC were present at the Facilities Committee meeting to discuss the buyout savings.

Upon a motion by Mr. Gary Gurwitz and a second by Mrs. Graciela Farias, the Facilities Committee recommended Board approval of the proposed change orders for the buyout savings of \$720,878 for the Pecan Campus North Academic Building and \$400,000 for the Technology Campus Parking and Site Improvements for a total of \$1,120,878, and to reduce the GMP amounts for the 2013 Bond Construction projects as presented. The motion carried.

Due to time constraints, the Facilities Committee took the following items out of order:

Review and Recommend Action on Contracting Construction Services for the Non-Bond Pecan Plaza Parking Area for Police Vehicles

Approval to contract construction services for the Non-Bond Pecan Plaza Parking Area for Police Vehicles project will be requested at the December 13, 2016 Board meeting.

Purpose

The procurement of a contractor would provide for construction services necessary for the Non-Bond Pecan Plaza Parking Area for Police Vehicles project.

Background

On October 27, 2016, the Board of Trustees approved design services with R. Gutierrez Engineering Corporation to prepare plans and specifications for the Non-Bond Pecan Plaza Parking Area for Police Vehicles project. The design team at R. Gutierrez Engineering Corporation worked with college staff in preparing and issuing the necessary plans and specifications for the solicitation of competitive sealed proposals.

Solicitation of competitive sealed proposals for this project began on October 31, 2016. A total of ten (10) sets of construction documents were issued to general contractors and sub-contractors, and a total of six (6) proposals were received on November 16, 2016.

Timeline for Solicitation of Competitive Sealed Proposals	
October 31, 2016	Solicitation of competitive sealed proposals began.
November 16, 2016	Six (6) proposals were received.

Justification

The current South Texas College Department of Public Safety (DPS) vehicles were located in the parking lot in front of the College's Department of Public Safety (DPS). The parking area was unsecured and the vehicles were exposed to the open environment. It was necessary to have an enclosed parking area adjacent to the DPS facility in the available property owned by the College. The project would include concrete paving, exterior lighting, storm drainage, fencing, and landscaping. This project was submitted as part of the College's Capital Improvement Process and funding was available.

The submitted proposal, however, did not include a paint finish or a precast cap on the concrete block fence walls. The finish work on the walls would be addressed by College staff and a recommendation would be presented to the Facilities Committee at a later date.

The Board approved the hiring of the engineer to perform design services necessary to receive construction proposals. The Board had advised that upon receiving the bids, the Board may recommend not proceeding with the construction of the project if the proposals were cost prohibitive.

College staff reviewed and evaluated the competitive sealed proposals and recommended NM Contracting, LLC as the highest ranked in the amount of \$200,000.

Funding Source

Funds for this project were budgeted in the FY 2016 - 2017 Non-Bond Construction budget in the amount of \$250,000.

Source of Funding	Amount Budgeted	Funds Available	Highest Ranked Proposal NM Contracting, LLC
Non-Bond Construction	\$250,000	\$250,000	\$200,000

Reviewers

The proposals were reviewed by R. Gutierrez and staff from the Facilities Planning & Construction, Operations and Maintenance, Public Safety, and Purchasing departments.

Enclosed Documents

Staff evaluated these proposals and provided a proposal summary. Photographs of the existing site and a plan of the proposed parking lot were also provided. It was recommended that the top ranked contractor be recommended for Board approval.

Upon a motion by Mr. Gary Gurwitz and a second by Dr. Alejo Salinas, Jr., the Facilities Committee recommended Board approval at the December 13, 2016 Board meeting, to contract construction services with NM Contracting, LLC in the amount of \$200,000 for the Non-Bond Pecan Plaza Parking Area for Police Vehicles project as presented. The motion carried.

The Facilities Committee was informed that there was a display of furniture pieces for their review; furthermore, the architect preparing to present color boards for the Committee's recommendation of Board action proposed that reviewing the furniture display would help put his presentation in context.

The Facilities Committee recessed at 5:07 p.m. to review the furniture display.

The Facilities Committee reconvened at 5:40 p.m. to resume the meeting.

Review and Recommend Action on Color Boards for the 2013 Bond Construction Projects

- 1. Starr County Campus Health Professions and Science Building**
- 2. Starr County Campus Student Services Expansion**
- 3. Starr County Campus Student Activities Expansion**
- 4. Starr County Campus Library**
- 5. Starr County Campus Thermal Plant**

Approval of the colors and finishes for the 2013 Bond Construction projects will be requested at the December 13 2016 Board meeting.

Background

The architects prepared updated color boards and interior renderings containing interior paint colors, wall finishes, flooring materials, millwork finishes, and wall tile for review by the Facilities Committee.

The preliminary color boards were originally presented for review and comment only at the November 22, 2016 Facilities Committee meeting.

Presenters

Mr. Hector Garcia from the Mata + Garcia Architects, LLP was present at the December 6, 2016 Facilities Committee meeting to provide and present the recommended color boards.

Upon a motion by Mr. Gary Gurwitz and a second by Dr. Alejo Salinas, Jr., the Facilities Committee recommended Board approval of the selection of colors and finishes for the 2013 Bond Construction Starr County Campus projects as presented. The motion carried.

Review and Recommend Action on Furniture Selections for the 2013 Bond Construction Program

Approval of furniture selections for the 2013 Bond Construction Program will be requested at the December 13, 2016 Board meeting.

Purpose

The College had current furniture standards for the buildings throughout the college district. The College was in need of updating furniture standards for the new 2013 Bond Construction projects and for use in any existing college facilities. The approval of the furniture selections was necessary to establish the standards and to allow for the buildings to be furnished in time for occupancy.

Justification

The standardization of furniture products allows for equity and consistency throughout the district and for optimization of cost efficiencies.

Background

On December 15, 2015, the Board of Trustees approved contracting HPG Design Group, LLC for furniture consulting services for the 2013 Bond Construction Program. HPG Design Group, LLC began working with Broaddus & Associates, Facilities Planning & Construction, and College staff to review, develop, and update the furniture standards. HPG Design Group, LLC was working with the design teams to provide furniture layouts, cost estimates, furniture selections including fabrics, colors, and material finishes. The types of furniture includes tables, chairs, soft seating, and desks for various spaces such as classrooms, multi-purpose rooms, dining areas, and student collaboration areas to be used district wide. The proposed selections were provided in a mock up setting at the Pecan Campus Building A Atrium on December 6, 2016.

Funding Source

Furniture funds were budgeted in the Bond Construction budget for fiscal year 2016-2017.

Reviewers

The proposed furniture selections were reviewed by Broaddus & Associates and College staff.

Presenters

Representatives from HPG Design Group, LLC and Broaddus & Associates were present at the Facilities Committee meeting to present furniture selections.

The Facilities Committee took no action on this item and asked that the information be presented to the Board without a committee recommendation.

Update on Status of Non-Bond Construction Projects

The Facilities Planning and Construction staff provided a design and construction update. This update summarized the status of each capital improvement project currently in progress. Mary Elizondo and Rick de la Garza were present to respond to questions and address concerns of the committee.

This item was for the Committee's information and review, and no action was taken.

Adjournment

There being no further business to discuss, the Facilities Committee Meeting of the South Texas College Board of Trustees adjourned at 6:00 p.m.

I certify that the foregoing are the true and correct minutes of the December 6, 2016 Facilities Committee Meeting of the South Texas College Board of Trustees.

Mr. Gary Gurwitz, Chair

Update on Status of the 2013 Bond Construction Program and Status of Project and Program Accountability

Broaddus & Associates has provided the enclosed documents on the current status of the 2013 Bond Construction program.

- Update on the status of the 2013 Bond Construction Program;
- Video Update on Construction Projects;
- Chart of Project Progress; and
- Project Scorecards
- Master Program Schedule as of October 27, 2017 Board Meeting

Broaddus & Associates has provided the following accountability reports:

- Program Budget Summary worksheet;
- Construction Budget worksheet;

In addition, the College administration has provided the following documents to reflect the 2013 Bond Construction Program budget shortfalls:

- Non-Bond Commitments and Expenditures worksheet
- Tracking Contingency Log

As of January 17, 2017, the total budget shortfall is estimated to be at \$4,668,372 with the use of buyout savings and design and construction contingency. There were no changes to bond budget this month and the estimated total budget shortfall remains the same as reported at the December 13, 2016 Board meeting.

Funding for any shortfall net of buyout savings and use of design and construction contingency will be covered by non-bond funds.

No action is requested.

SOUTH TEXAS COLLEGE

2013 BOND CONSTRUCTION PROGRAM UPCOMING TIMELINE

Facilities Committee Meeting

January 17, 2017

**BROADDUS
& ASSOCIATES**



BOARD APPROVAL ITEMS

South Texas College
 2013 Bond Construction Program
 Upcoming Timeline – 01/17/17

November '16 December '16 January '17 February '17 March '1

	Update (No Action)	Update (No Action)	Update (No Action)	Update (No Action)	Update (No Action)	Update (No Action)
Board Approval						
1	Update (No Action)	Update (No Action)	Update (No Action)	Update (No Action)	Update (No Action)	Update (No Action)
2	Accountability Status	Accountability Status	Accountability Status	Accountability Status	Accountability Status	Accountability Status
3	GMP Approvals – Starr Campus Student Services & Activities	Buyout Deductive Change Orders	Buyout Deductive Change Orders	Buyout Deductive Change Orders	Additional Service Thermal Energy Plant Landscape	Buyout Deductive Change Orders
4	N&AH Thermal Energy Plant GMP	Starr County Color Board Approvals	Pharr RCPSE Update & Master Plan Revision	Pharr RCPSE Update & Master Plan Revision	Pecan STEM & SA Color Board Approvals	Pharr RCPSE Building GMP Approval
5	Pharr RCPSE SD Approval 11/22					
6	GMP Approvals – Starr Campus Student Services & Activities					

OPERATIONAL ITEMS

**South Texas College
2013 Bond Construction Program
Upcoming Timeline**

November '16 December '16 January '17 February '17 March '17

		November '16	December '16	January '17	February '17	March '17
Operational						
1		NTP's	NTP's	NTP's	NTP's	NTP's
2		Ongoing Construction Activity	Ongoing Construction Activity	Ongoing Construction Activity	Ongoing Construction Activity	Ongoing Construction Activity
3		Buyout Savings Requests	Buyout Savings Requests	Concrete Foundation Pours Ongoing	Buyout Savings Requests	Buyout Savings Requests
4		B&A Staff Alignment	Identify Non-Bond Additional Scope/Funds			
5						
6						
7						
8						
9						
10						

INFORMATION & PRESENTATION ITEMS

South Texas College
2013 Bond Construction Program
Upcoming Timeline

November '16 December '16 January '17 February '17 March '17

	November '16	December '16	January '17	February '17	March '17
1	Bond Program Budget Update	Bond Program Budget Update	Bond Program Budget Update	Bond Program Budget Update	Bond Program Budget Update
2	Contingency & Buyout tracking	Contingency & Buyout tracking	Contingency & Buyout tracking	Contingency & Buyout tracking	Contingency & Buyout tracking
3				Drone Construction Video Update	Drone Construction Video Update
4					OCIP Update
5					
6					
7					
8					
9					
10					
Informational/Presentations					

2013 BOND CONSTRUCTION PROGRAM PROGRESS REPORT - January 17, 2017

Project Number	PROJECT DESCRIPTION	Project Development				Design Phase				Price Proposals				Construction Phase						Architect/Engineer	Contractor	
		Project Development	Board approval of A/E	Contract Negotiations	Concept Development	Schematic Approval	Design Development	30%	60%	95%	100%	B&A Review	Board Approval	30%	50%	75%	95% Substantial Comp	Occupancy	100%			Final Completion
Pecan Campus																						
	North Academic Building																			PKB Architects	D. Wilson Construction	
	South Academic Building																				BSA Architects	D. Wilson Construction
	STEM Building																				BSA Architects	D. Wilson Construction
	Student Activities Building and Cafeteria																				Warren Group Architects	D. Wilson Construction
	Thermal Plant Expansion																				Halff Associates	D. Wilson Construction
	Parking and Site Improvements																				PCE	D. Wilson Construction
Mid Valley Campus																						
	Health Professions and Science Building																				ROFA Architects	Skanska USA
	Workforce Training Center Expansion																				EGV Architects	Skanska USA
	Library Expansion																				Mata + Garcia Architects	Skanska USA
	Student Services Building Expansion																				ROFA Architects	Skanska USA
	Thermal Plant																				DBR Engineering	Skanska USA
	Parking and Site Improvements																				Halff Associates	Skanska USA
Technology Campus																						
	Southwest Building Renovation																				EGV Architects	ECON Construction
	Parking and Site Improvements																				Hinjosa Engineering	ECON Construction
Nursing and Allied Health Campus																						
	Campus Expansion																				ERO Architects	D. Wilson Construction
	Parking and Site Improvements																				R. Gutierrez Engineers	D. Wilson Construction
Starr County Campus																						
	Health Professions and Science Building																				Mata + Garcia Architects	D. Wilson Construction
	Workforce Training Center Expansion																				EGV Architects	D. Wilson Construction
	Library																				Mata + Garcia Architects	D. Wilson Construction
	Student Services Building Expansion																				Mata + Garcia Architects	D. Wilson Construction
	Student Activities Building Expansion																				Mata + Garcia Architects	D. Wilson Construction
	Thermal Plant																				Sigma HN Engineers	D. Wilson Construction
	Parking and Site Improvements																				Melden & Hunt Engineering	D. Wilson Construction
Regional Center for Public Safety Excellence - Pharr																						
	Training Facility																				PKB Architects	TBD
	Parking and Site Improvements																				Dannenbaum Engineering	TBD
STC La Joya Teaching Site (Jimmy Carter ECHS)																						
	Training Labs Improvements																				EGV Architects	TBD

STC 2013 Bond Program - Pecan Campus North Academic Building

Scorecard #21

Status: **Submitted**

01/05/2017



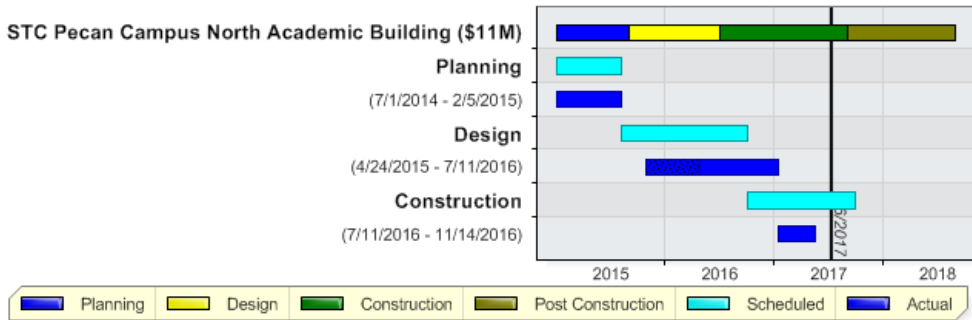
Scope

	Initial Program	Current Program
Building SF	61,267	61,267
Budget	\$10,500,000	\$10,500,000
SD Estimate		\$11,015,000
DD Estimate		\$11,400,000
CD 30%		\$11,462,000
CD 60% GMP		\$10,951,000

Budget

	Initial Budget
--	----------------

Schedule



Activity

30 Day Look Ahead

- Structural steel thru LV 3
- Concrete floor at LV 2
- Metal Studs and sheathing exterior and interior
- Masonry continues at elevator and stairwells

Key Consultants/Contractors

- Architect: PBK Architects
- MEP: DBR Engineering
- Structural: Chanin Engineering
- Civil: Perez Consulting Engineers
- AV/IT WJHW Consultants
- D.Wilson Construction Co.

Key Owner Issues or Concerns

- Primary power to 'Temporaries' to complete transfer prior to start of Spring Semester

Recent Photo



STC 2013 Bond Program - Pecan Campus South Academic Building

Scorecard #21

Status: **Submitted**

01/05/2017



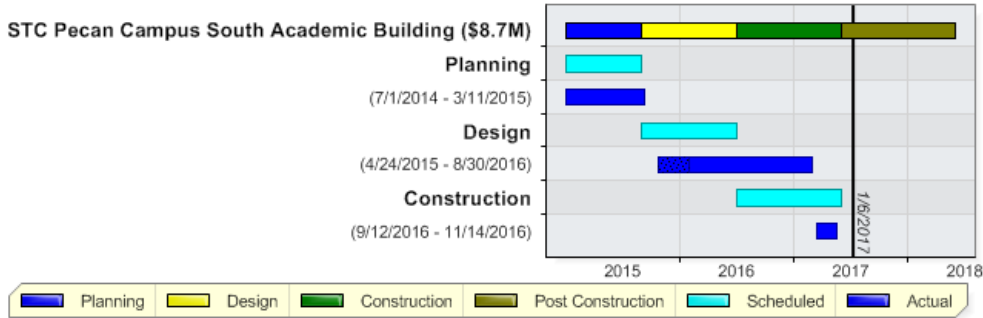
Scope

	Initial Program	Current Program
Building SF	40,000	41,694
Budget	\$6,800,000	\$6,800,000
SD Estimate		\$7,605,000
DD Estimate		\$7,375,866
60% CD GMP		\$6,657,834

Budget

	Initial Budget
--	----------------

Schedule



Activity

30 Day Look Ahead

- Fabricate structural steel, start delivery
- Site utilities adjacent building

Key Consultants/Contractors

- Architect: BSG Architects
- MEP: Half Associates
- Structural: Lopez Engineering
- Civil: PCE
- AV/IT WJHW Consultants

Key Owner Issues or Concerns

- Struct Steel shop drawing complications set back fabrication and delivery

Recent Photo



**STC 2013 Bond Program - Pecan Campus
STEM Building**

Scorecard #20
Status: **Submitted**
01/05/2017



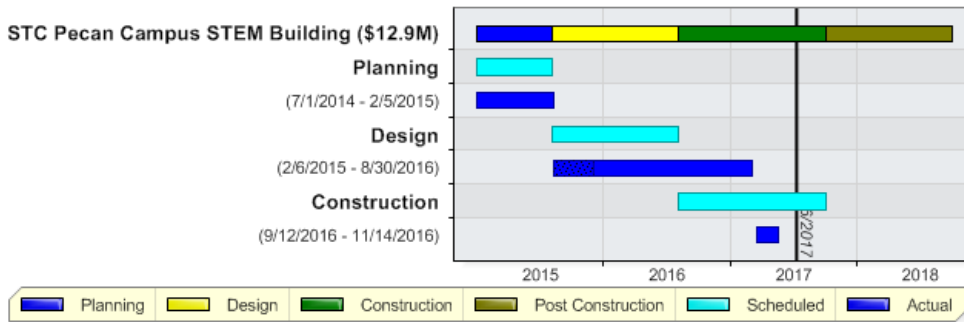
Scope

	Initial Program	Current Program
Building SF	48,879	51,276
Budget	\$8,500,000	\$8,500,000
SD Estimate		\$9,397,167
DD Estimate		\$9,703,192
CD 30% Est		\$0
CD 60% GMP		\$10,417,059

Budget

	Initial Budget
--	----------------

Schedule



Activity

30 Day Look Ahead

- Fabricate structural steel, start delivery
- Site utilities adjacent building

Key Consultants/Contractors

- Architect: Boultinghouse Simpson Gates
- MEP: Half Associates
- Structural: Lopez Engineering Group
- Civil: Perez Consulting Engineers
- AV/IT WJHW Consultants

Key Owner Issues or Concerns

- Complications of Struct Steel shop drawing process sets back steel fabrication and delivery

Recent Photo



STC 2013 Bond Program Pecan Campus Cafeteria & Activities Building

Scorecard #21

Status: **Submitted**

01/05/2017



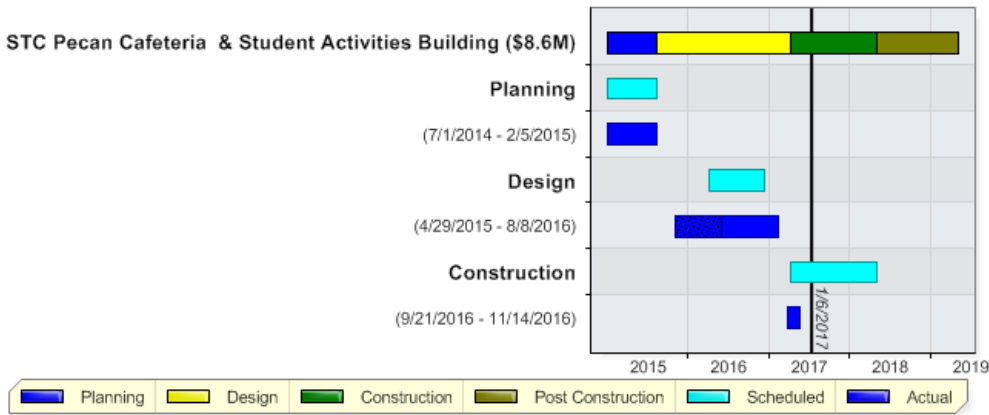
Scope

	Initial Program	Current Program
Building SF	33,042	33,042
Budget	\$5,700,000	\$6,200,000
SD Estimate		\$6,166,259
DD Estimate		\$6,602,118
30% CD	\$6,350,000	\$6,719,006
60% CD GMP		\$6,888,179

Budget

	Initial Budget
--	----------------

Schedule



Activity

30 Day Look Ahead

- Structural steel delivery and start erection
- Masonry at elevator and stairs
- Storm and Sanitary reroute

Key Consultants/Contractors

- Architect: TWG
- MEP: Halff Associates
- Structural: Chanin Engineering
- Civil: Perez Consulting Engineers
- Kitchen: Cospir & Assoc.

Key Owner Issues or Concerns

- Site utility coordination with slab construction (deep SD between Cooling Towers and SACB)

Recent Photo



STC 2013 Bond Program - Pecan Campus Thermal Plant

Scorecard #20
 Status: **Submitted**
 01/05/2017



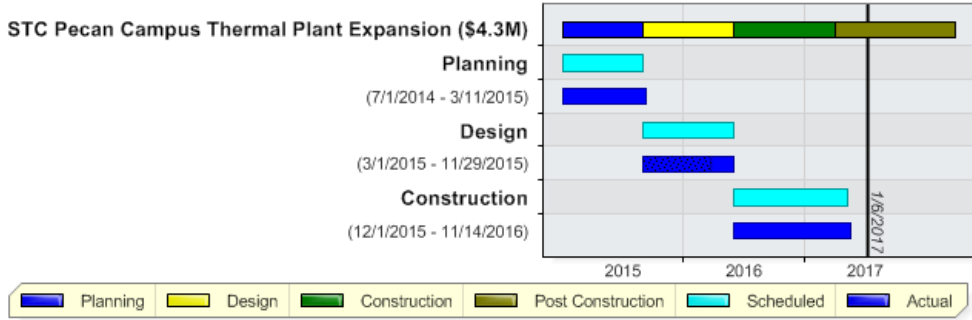
Scope

	Initial Program	Current Program
Building SF	1,440	3,182
Budget	\$4,300,000	\$4,300,000
GMP		\$4,194,000

Budget

	Initial Budget
--	-----------------------

Schedule



Activity

30 Day Look Ahead

- T&B of chillers and towers
- Prepare Final Time and Cost change order
- Complete closeout and Project Record Documents, Owner Training, etc.

Key Consultants/Contractors

- Architect: Half Associates
- Structural: Chanin Engineering
- MEP: Half Associates
- Civil: PCE Engineering
- AV/IT WJHW Consultants

Key Owner Issues or Concerns

- Reintroduce decorative 'Waves' motif to screen wall

Recent Photo



STC 2013 Bond Program Pecan Campus Parking & Site Improvements

Scorecard #15
 Status: **Submitted**
 01/05/2017



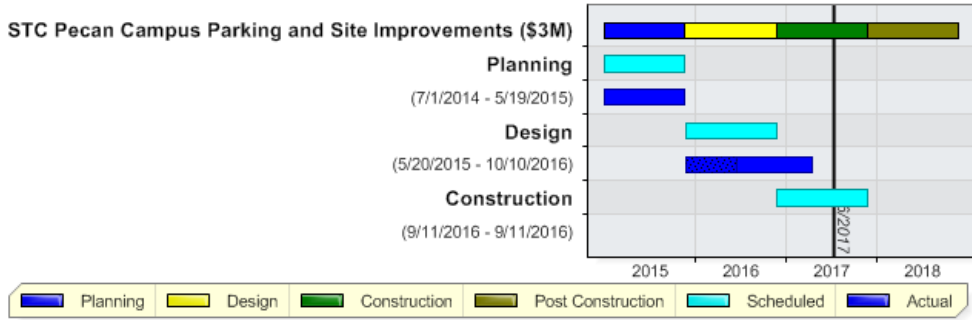
Scope

	Initial Program	Current Program
Budget	\$2,000,000	\$2,000,000
60% CD GMP		\$2,618,800

Budget

	Initial Budget
--	-----------------------

Schedule



Activity

30 Day Look Ahead

- Bids evaluation underway; CMR is reconciling their GMP.
- Curb cuts and drive aprons at South part of campus
- Deep utilities around Cafe, STEM and South

Key Consultants/Contractors

- Perez Consulting Engineers (PCE)
- Landscape Designer: SSP Landscape Design

Key Owner Issues or Concerns

- Actual start of deep utilities requires careful coordination with imminent start of adjacent building pads / foundation work.

Recent Photo



STC 2013 Bond Program - Nursing and Allied Health Expansion Bldg

Scorecard #22

Status: **Submitted**

01/06/2017



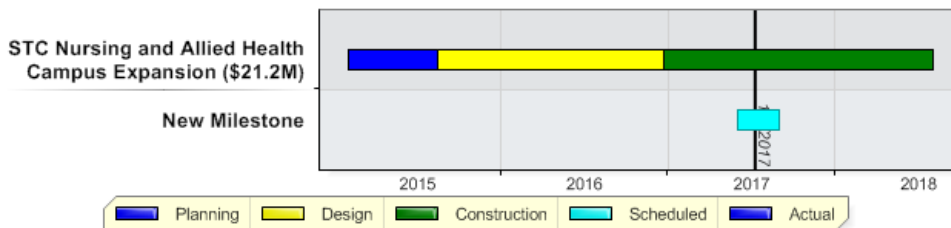
Scope

- Hospital Simulation Center
- Library
- Cafeteria
- Classrooms
- Offices

Budget

	Initial Budget
--	----------------

Schedule



Activity

30 Day Look Ahead

- Complete cmu block at kitchen area
- Concrete Pour on L3
- Install 1st floor ext. curtainwall framing
- Complete main structural steel

Key Consultants/Contractors

- ERO Architects
- 720 Design of Library
- Gutierrez Engineering
- D. Wilson Construction Co.

Key Owner Issues or Concerns

Weather delays

Recent Photo



NAH Thermal Energy Plant & Site

Scorecard #8
Status: **Submitted**
12/21/2016



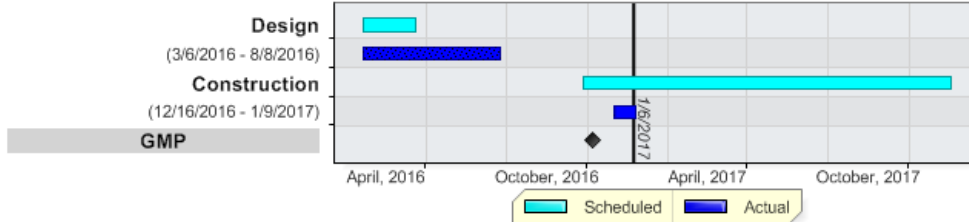
Scope

New Thermal Energy Plant for New Nursing Building and the Existing Nursing building
Approx 3500 Sq ft

Budget

	Initial Budget
--	-----------------------

Schedule



Activity

30 Day Look Ahead

- GMP Approved Nov 22
- NTP issued December 16
- Submittals to begin

Key Consultants/Contractors

- Half & Associates- MEP
- RGutierrez Engineering - Civil
- DWilson Construction - Contractor

Key Owner Issues or Concerns

- Permit Pending

Recent Photo



Nursing and Allied Health Parking Lot and Site Improvement

Scorecard #16
 Status: **Submitted**
 01/06/2017



Scope

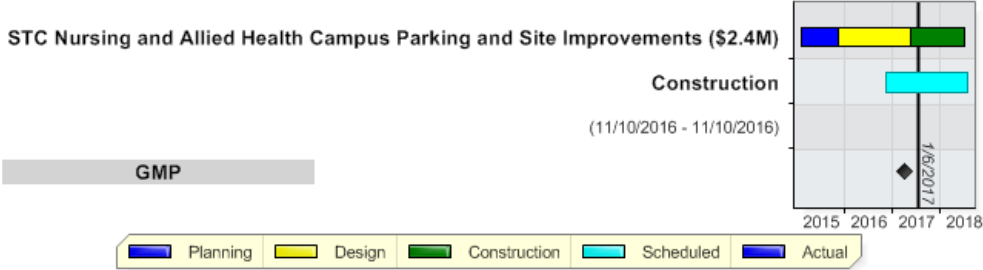
Sitework and Parking Lot for the New Nursing and Allied Health Building

Budget

	Initial Budget
--	-----------------------

Schedule

STC Nursing and Allied Health Campus Parking and Site Improvements (\$2.4M)



Activity

30 Day Look Ahead

- NTP issued for Construction November 11

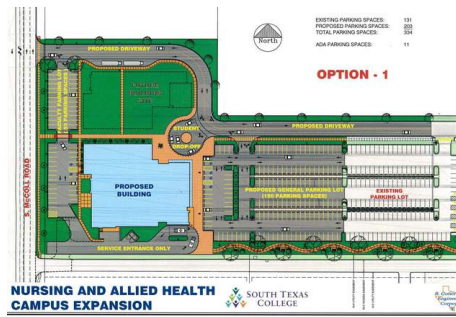
Key Consultants/Contractors

- Gutierrez Engineering
- ERO Architects
- D Wilson Construction

Key Owner Issues or Concerns

- GMP is \$784,048 over budget

Recent Photo



Scope

A new multilevel Health Professions and Science Building

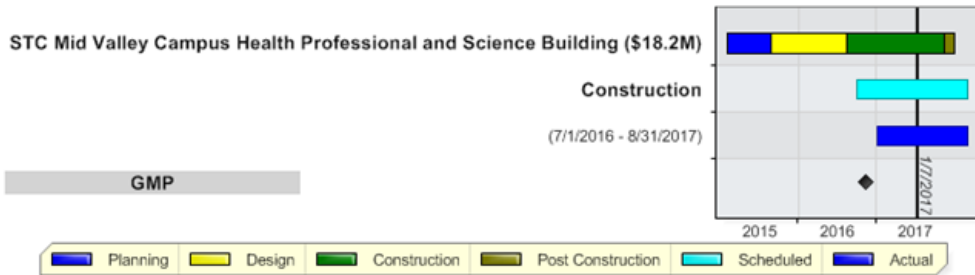
to house the following spaces:

- Science Classrooms
 1. Chemistry
 2. Physics
 3. Biology
 4. Engineering
- Laboratory Classrooms
- Departmental Offices
- Classrooms
- Computer labs

Budget

	Initial Budget
--	-----------------------

Schedule



Activity

30 Day Look Ahead:

- Complete installation of drilled piers.
- Begin UG utility rough-ins.

Key Consultants/Contractors:

- ROFA Architects
- DBR- MEP
- HALFF -CIVIL
- Skanska USA

Key Owner Issues or Concerns:

- Schedule completion Priority Project

Recent Photo



STC 2013 Bond Program Mid Valley Campus Student Services Addition

Scorecard #20

Status: **Submitted**

01/07/2017



Scope

Student Services Building will include but not limited to:

- Cafeteria
- Lounge Space
- Building Support
- Offices
- Student Admissions

14,262 sq. ft

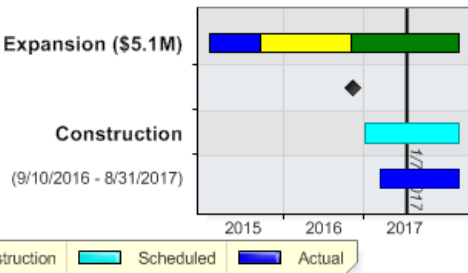
Budget

	Initial Budget
--	----------------

Schedule

STC Mid Valley Campus Student Services Building Expansion (\$5.1M)

GMP



Activity

30 Day Look Ahead:

- Continue interior space demolition.
- Complete building pad installation.
- Begin UG utility rough-ins.
- Continue tie-in of utility mains.

Key Consultants/Contractors

- Architect: ROFA Architects
- Structural: Hinojosa Engineering
- MEP: DBR Engineering
- Civil: Half Associates
- CMR: Skanska USA

Key Owner Issues or Concerns

- Schedule & Cost

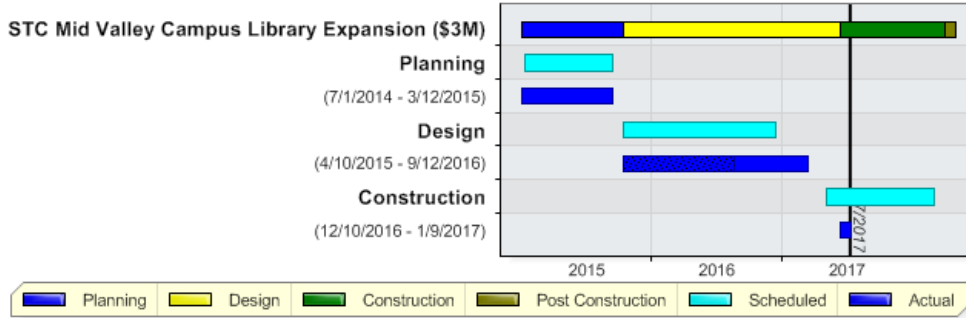
Recent Photo



Scope

10,300 sq ft addition to the Existing Mid Valley Library and a Remodeling of the Existing Library

Schedule



Activity

30 Day Look Ahead

- CMR is in the process of buying project out.
- Earthwork to commence prior to permit issuance as allowed by Authority Having Jurisdiction.

Key Consultants/Contractors

- AE: M+G
- Structural: CLH Engineering
- MEP: Sigma HN
- Civil: Melden & Hunt

Key Owner Issues or Concerns

- Permit issuance

Recent Photo



STC 2013 Bond Program Mid Valley Campus Thermal Plant Expansion

Scorecard #19

Status: **Submitted**

01/07/2017



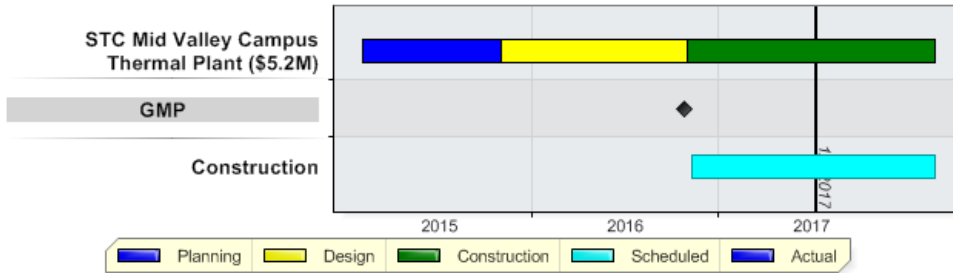
Scope

Design for a New Thermal Energy Plant for the Mid Valley Campus to include all new STC Bond projects and Retrofit of all existing buildings

Budget

	Initial Budget
--	-----------------------

Schedule



Activity

30 Day Look Ahead

- Conduct wall-up inspections.
- Continue with overhead MEP rough-ins.
- Begin installation of brick veneer.
- Continue with installation of UG CHW lines throughout the Campus.
- Complete installation of roof.
- Complete poured in-place mechanical house keeping pads.
- Install Cooling Tower drilled piers.
- Delivery and setting of Chillers on 2-3-17.

Key Consultants/Contractors

- DBR Engineering
- Rofa Architects
- Mata Garcia Architects
- EGV Architects
- Half Civil
- Skanska USA

Key Owner Issues or Concerns

- Unforeseen underground concrete slabs

Recent Photo



STC 2013 Bond Program Mid Valley Campus Parking and Site Improvements

Scorecard #19
 Status: **Submitted**
 01/07/2017



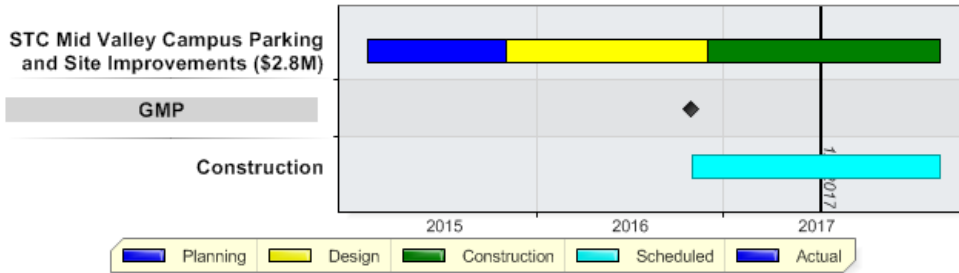
Scope

Design of all Civil Engineering , Landscaping and Surveying for All the Mid Valley Campus Bond Projects which includes a new parking lot

Budget

	Initial Budget
--	-----------------------

Schedule



Activity

30 Day Look Ahead

- Complete installation and compaction of flex base material at parking lot.
- Complete instalation of duct bank portion running North/South perpendicular to proposed parking lot once CHW line installation is complete within same corridor.

Key Consultants/Contractors

- Half Civil
- Rofa Architects
- Mata Garcia Architects
- EGV Architects
- DBR Engineering
- Skanska USA

Key Owner Issues or Concerns

- Unforeseen underground concrete slabs

Recent Photo



Scope

Technology Building will include but not limited to:

- Office/Administration Spaces
- Classroom/Computer Labs
- Open Labs
- Shared Spaces
- Shipping & Receiving
- Audio Visual
- IT

for a total ASF of 80,994.

Budget

	Initial Budget
--	----------------

Schedule



Activity

30 Day Look Ahead:

- Begin setting of HVAC units at mechanical mezzanine(s).
- Continue installation of metal stud walls at areas A & C.
- Continue in-wall rough-ins within areas A & C.
- Continue over head rough-ins within areas A,B,C & D.
- Continue re-roofing activities over section A.
- Continue with pressure testing of metal duct followed by insulation installation at areas A & C.
- Continue structural steel erection at East and South building entries.
- Continue installation of UG utilities from 5' outside the building footprint.

Key Consultants/Contractors

- Architect: EGV Architects, Inc
- Structural: Chanin
- MEP: Trinity
- CMR: ECON Enterprises

Key Owner Issues or Concern

- NO current concerns

Recent Photo



STC 2013 Bond Program Technology Campus Civil and Sitework

Scorecard #16
 Status: **Submitted**
 01/07/2017



Scope

Civil, Sitework, Landscaping and Surveying for the Renovations to the STC Technology Campus

Budget

	Initial Budget
--	-----------------------

Schedule

STC Technology Campus Parking and Site Improvements (\$.8M)



Activity

30 Day Look Ahead

- Complete lime admixture operations and subgrade testing.
- Complete installation of flex base material.

Key Consultants/Contractors

- Hinojosa Engineering
- EGV Architects
- ECON Construction

Key Owner Issues or Concerns

- No concerns at this time

Recent Photo



STC 2013 Bond Program - Starr County Campus Health / Science Building

Scorecard #20

Status: **Submitted**

01/06/2017



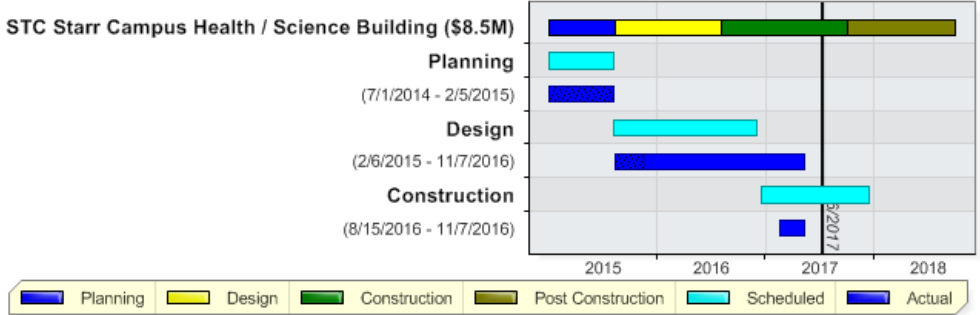
Scope

Health bldg, 2 story, consisting of computer labs, skills labs, OB simulation, chemistry labs, information labs, biology and micro biology labs.

Budget

	Initial Budget
--	-----------------------

Schedule



Activity

30 Day Look Ahead

- Complete 2nd floor decking
- Complete top level steel
- 1st fl. curtainwall panels and shoring

Key Consultants/Contractors

- Architect: Mata+Garcia
- MEP: Sigma Engineering
- Structural: CLH Engineering
- Civil: Melden & Hunt Engineering
- AV/IT WJHW Consultants

Key Owner Issues or Concerns

- Weather delays

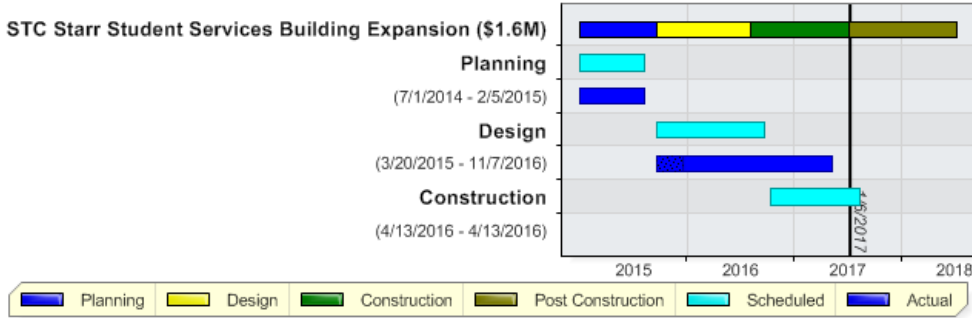
Recent Photo



Scope

	Initial Program	Current Program
Building SF	5,000	5,000
Budget	\$850,000	\$850,000
SD Estimate		\$1,148,151
60% CD GMP		\$1,320,000

Schedule



Activity

30 Day Look Ahead

- NTP
- Mobilization
- Building Permit

Key Consultants/Contractors

- Architect: Mata + Garcia Architects
- MEP: Sigma Engineering
- Structural: CLH Engineering
- Civil: Melden & Hunt
- AV/IT WJHW Consultants

Key Owner Issues or Concerns

- Appearance of one building not two
- Improved Veteran's areas
- Uniformity of Welcome Centers
- Weather Delays

Recent Photo



STC 2013 Bond Construction Program - Starr Student Activities Building

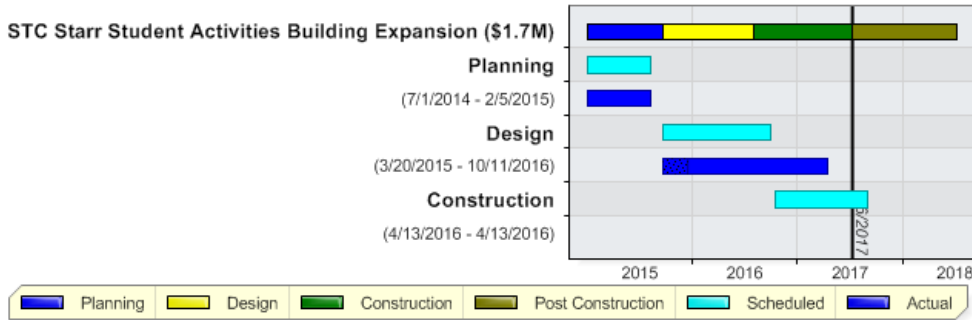
Scorecard #20
 Status: **Submitted**
 01/06/2017



Scope

	Initial Program	Current Program
Building SF	4,923	4,150
Budget	\$850,000	\$850,000
60% CD GMP	Rejected	\$1,615,000
60% GMP Revised		\$1,365,000

Schedule



Activity

30 Day Look Ahead

- NTP
- Mobilization of CM/R
- Building permit

Key Consultants/Contractors

- Architect Mata + Garcia Architects
- MEP Sigma Engineering
- Structural: CLH Engineering
- Civil: Melden & Hunt Engineering
- AV/IT: WJHW Consultants

Key Owner Issues or Concerns

- Multipurpose use for building
- Student gatherings, Community gatherings
- Weather delays

Recent Photo



STC 2013 Bond Program - Starr County Campus Thermal Plant

Scorecard #17

Status: **Submitted**

01/06/2017



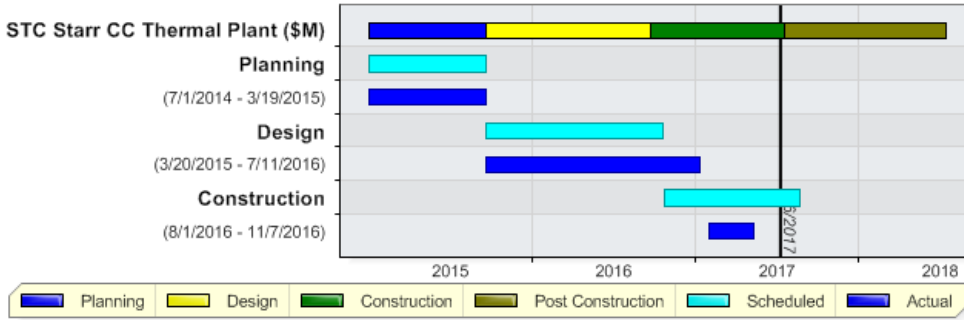
Scope

To provide Hydronic piping, (chilled water piping) to the new additional buildings, renovations (expansions) of buildings, and to replace piping to existing roof top units

Budget

	Initial Budget
--	-----------------------

Schedule



Activity

30 Day Look Ahead

- Excavation and installation Hydronic piping
- Install poly, rebar, in-beds
- Pour slab
- Start CMU perimeter walls

Key Consultants/Contractors

- Prime Consultant: Sigma HN
- Architect Consultant: M+G
- Structural: CLH Engineering
- MEP: Sigma HN Engineering
- Civil: Melden & Hunt

Key Owner Issues or Concerns

- Completion of Hydronic piping installation, (public areas), during winter break
- Dry in for delivery of Chillers.

Recent Photo



STC Starr CC Parking and Site Improvements

Scorecard #11

Status: **Submitted**

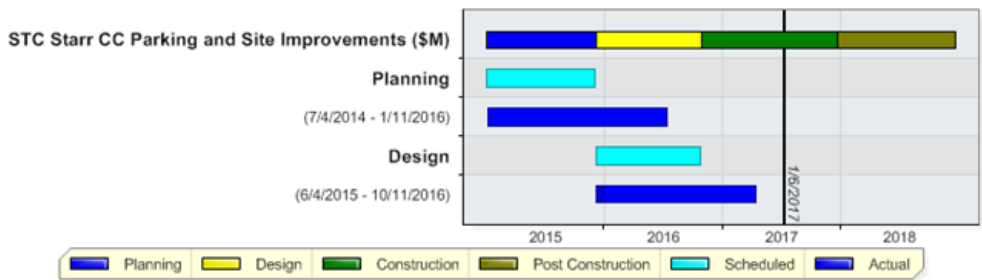
01/06/2017



Scope

	Initial Program	Current Program
Site Area		
Budget	\$1,000,000	\$1,464,000
SD Estimate		Pending
DD Estimate		In Progress
30% Est	Base Est.	\$2,777,000
Partial GMP		\$119,800
60% GMP		In Progress

Schedule



Activity

30 Day Look Ahead

- M&H Engineering working on 100% CDs
- D. Wilson Construction working on pricing
- Building permit

Key Consultants/Contractors

- Civil: Melden & Hunt
- MEP: Sigma HN
- Landscaping: SSP

Key Owner Issues or Concerns

- Weather delays

SOUTH TEXAS COLLEGE
2013 Bond Construction Program
Program Budget Summary Spreadsheet
1/11/2017 12:57 PM

2013 Bond Program Budget Summary <i>Facilities Committee Meeting of January 17, 2017</i>	Square Feet Cost				CCL/SF	GMP/SF	Construction Cost					
	Org. Square Feet	Proposed Sq. Feet	Variance in Sq. Ft.	Construction Based on Org. Sq. Ft.			Org. CCL	GMP Total	GMP Variance	Org. Construction Contingency	Current Construction Contingency	Variance in Construction Contingency
Pecan Campus												
North Academic Building	61,267	64,299	3,032	\$ 13,893,664	171	159	\$ 10,500,000	\$ 10,230,122	\$ (269,878)	\$ 150,000	\$ 162,000	\$ 12,000
South Academic Building	40,000	41,694	1,694	\$ 9,196,633	170	160	\$ 6,800,000	\$ 6,657,834	\$ (142,166)	\$ 100,000	\$ 98,355	\$ (1,645)
STEM Building	48,879	50,614	1,735	\$ 11,536,375	174	206	\$ 8,500,000	\$ 10,417,059	\$ 1,917,059	\$ 125,000	\$ 153,990	\$ 28,990
Multi-purpose space for student support srvs. & activities	33,042	31,219	(1,823)	\$ 8,112,884	173	221	\$ 5,700,000	\$ 6,888,179	\$ 1,188,179	\$ 85,000	\$ 100,000	\$ 15,000
Thermal Plant Expansion	1,440	3,105	1,665	\$ -	N/A	N/A	\$ 4,300,000	\$ 4,194,000	\$ (106,000)	\$ 50,000	\$ 50,000	\$ -
Parking & Site Improvements (GMP Included Atl. #1 & #2)	-	-	-	\$ -	N/A	N/A	\$ 2,000,000	\$ 2,618,800	\$ 618,800	\$ 30,000	\$ 37,500	\$ 7,500
Subtotal	184,628	190,931	6,303	\$ 42,739,556	172	186	\$ 37,800,000	\$ 41,005,994	\$ 3,205,994	\$ 540,000	\$ 601,845	\$ 61,845
Nursing & Allied Health Campus												
Expansion for Nursing & Allied Health	87,222	93,296	6,074	\$ 17,310,640	190	182	\$ 16,600,000	\$ 17,009,860	\$ 409,860	\$ 250,000	\$ 178,900	\$ (71,100)
Thermal Plant Expansion				\$ -	N/A	N/A	\$ -	\$ 230,788	\$ 230,788	\$ -	\$ 3,386	\$ 3,386
Parking & Site Improvements				\$ -	N/A	N/A	\$ 1,100,000	\$ 2,205,963	\$ 1,105,963	\$ 16,000	\$ 34,207	\$ 18,207
Subtotal	87,222	93,296	6,074	\$ 17,310,640	190	182	\$ 17,700,000	\$ 19,446,611	\$ 1,746,611	\$ 266,000	\$ 216,493	\$ (49,507)
Technology Campus												
Expansion for Technical & Workforce training programs	72,000	72,000	-	\$ 12,190,819	167	129	\$ 12,000,000	\$ 9,297,546	\$ (2,702,454)	\$ 175,000	\$ 147,215	\$ (27,785)
Parking & Site Improvements (1,793,216 +192,604 = 1,985,820)	-	-	-	\$ -	N/A	N/A	\$ 650,000	\$ 1,563,574	\$ 913,574	\$ 10,000	\$ 10,356	\$ 356
Subtotal	72,000	72,000	-	\$ 12,190,819	167	129	\$ 12,650,000	\$ 10,861,120	\$ (1,788,880)	\$ 185,000	\$ 157,571	\$ (27,429)
Mid Valley Campus												
Professional & Science Bldg.	76,069	78,649	2,580	\$ 18,827,059	177	184	\$ 13,500,000	\$ 14,453,388	\$ 953,388	\$ 200,000	\$ 193,887	\$ (6,113)
Expansion for Technical & Workforce training programs	10,000	11,810	1,810	\$ 2,308,064	175	148	\$ 1,750,000	\$ 1,750,000	\$ -	\$ (1,750,000)	\$ -	\$ 1,750,000
Library Expansion	10,369	10,814	445	\$ 2,393,231	169	228	\$ 1,750,000	\$ 2,462,776	\$ 712,776	\$ 25,000	\$ 34,723	\$ 9,723
Student Services Bldg. Expansion	14,269	17,929	3,660	\$ 3,293,376	175	215	\$ 2,500,000	\$ 3,850,923	\$ 1,350,923	\$ 37,000	\$ 51,093	\$ 14,093
Thermal Plant Expansion	4,000	3,088	(912)	\$ -	N/A	N/A	\$ 3,800,000	\$ 3,896,698	\$ 96,698	\$ 52,602	\$ 61,547	\$ 8,945
Parking & Site Improvements	-	-	-	\$ -	N/A	N/A	\$ 2,000,000	\$ 2,369,777	\$ 369,777	\$ 29,032	\$ 31,731	\$ 2,699
Subtotal	114,707	122,290	7,583	\$ 26,821,730	174	194	\$ 25,300,000	\$ 28,783,562	\$ 3,483,562	\$ (1,406,366)	\$ 372,981	\$ 1,779,347
Starr County Campus												
Health Professionals & Science Ctr. And STEM programs	48,690	51,789	3,099	\$ 12,397,425	175	184	\$ 8,500,000	\$ 9,521,000	\$ 1,021,000	\$ 125,000	\$ 143,000	\$ 18,000
Expand technical workforce training facilities	9,302	16,869	7,567	\$ 2,156,521	172	95	\$ 1,600,000	\$ 1,600,000	\$ -	\$ 25,000	\$ -	\$ (25,000)
Library and renovate existing space for Culteral Arts Center	16,516	18,381	1,865	\$ 3,373,085	170	201	\$ 2,800,000	\$ 3,700,000	\$ 900,000	\$ 42,000	\$ 55,500	\$ 13,500
Expansion of student services, advising, admissions, and financial services bldg.	5,000	5,310	310	\$ 1,292,198	170	249	\$ 850,000	\$ 1,320,000	\$ 470,000	\$ 13,000	\$ 19,500	\$ 6,500
Expansion of student activities building	4,923	4,670	(253)	\$ 1,272,299	173	292	\$ 850,000	\$ 1,365,000	\$ 515,000	\$ 13,000	\$ 21,000	\$ 8,000
Thermal Plant Expansion	4,000	4,267	267	\$ -	N/A	N/A	\$ 3,800,000	\$ 3,911,000	\$ 111,000	\$ 55,000	\$ 58,000	\$ 3,000
Parking & Site Improvements (GMP 1 - 119,800)	-	-	-	\$ -	N/A	N/A	\$ 1,226,820	\$ 3,496,950	\$ 2,270,130	\$ 15,000	\$ 54,254	\$ 39,254
Subtotal	88,431	101,286	12,855	\$ 20,491,528	172	204	\$ 19,626,820	\$ 24,913,950	\$ 5,287,130	\$ 288,000	\$ 351,254	\$ 63,254
Regional Center for Public Safety Excellence - Pharr												
New Regional Center for Publish Safety	16,000	21,120	5,120	\$ 3,169,435	175	133	\$ 2,800,000	\$ 2,800,000	\$ -	\$ 57,000	\$ -	\$ (57,000)
Parking & Site Improvements	-	-	-	\$ -	N/A	N/A	\$ 200,000	\$ 200,000	\$ -	\$ 18,000	\$ -	\$ (18,000)
Subtotal	16,000	21,120	5,120	\$ 3,169,435	175	133	\$ 3,000,000	\$ 3,000,000	\$ -	\$ 75,000	\$ -	\$ (75,000)
STC La Joja Teaching Site (Jimmy Carter ECHS)												
Develop STEM labs and entry level workforce training programs	11,000	11,000	-	\$ 1,100,000	100	100	\$ 1,100,000	\$ 1,100,000	\$ -	\$ 16,000	\$ -	\$ (16,000)
Subtotal	11,000	11,000	-	\$ 1,100,000	100	100	\$ 1,100,000	\$ 1,100,000	\$ -	\$ 16,000	\$ -	\$ (16,000)
Total	573,988	611,923	37,935	\$ 123,823,708	175	171	\$ 117,176,820	\$ 129,111,237	\$ 11,934,417	\$ (36,366)	\$ 1,700,144	\$ 1,736,510

SOUTH TEXAS COLLEGE
2013 Bond Construction Program
Program Budget Summary Spreadsheet
1/11/2017 12:57 PM

2013 Bond Program Budget Summary <i>Facilities Committee Meeting of January 17, 2017</i>	Part II - Construction Phase Srvs. - GMP Inclusions					Part I Construction Services	Owner Procured		GMP + Fees + Chillers + OCIP	Professional Services		
	Fixed Equipment	IT Ductbank	GMP Target	Current Est. or GMP (red)	Variance or Delta	Fees	Chillers	OCIP	SUBTOTAL	Design	Furniture Consultant	CPM
Pecan Campus												
North Academic Building			\$ 10,500,000	\$ 10,230,122	\$ 269,878	\$ 16,427		\$ 120,570	\$ 10,367,119	\$ 600,000	\$ 21,274	\$ 371,010
South Academic Building			\$ 6,800,000	\$ 6,657,834	\$ 142,166	\$ 10,638		\$ 78,116	\$ 6,746,588	\$ 400,000	\$ 13,890	\$ 236,318
STEM Building			\$ 8,500,000	\$ 10,417,059	\$ (1,917,059)	\$ 13,298		\$ 97,645	\$ 10,528,002	\$ 550,000	\$ 16,973	\$ 327,523
Multi-purpose space for student support srvs. & activities	\$ 585,000		\$ 6,285,000	\$ 6,888,179	\$ (603,179)	\$ 9,491		\$ 72,116	\$ 6,969,786	\$ 400,000	\$ 11,473	\$ 220,666
Thermal Plant Expansion			\$ 4,300,000	\$ 4,194,000	\$ 106,000	\$ 6,825	\$ 553,440	\$ 47,480	\$ 4,801,745	\$ 350,000	\$ 500	\$ 138,526
Parking & Site Improvements (GMP Included Atl. #1 & #2)		\$ 122,925	\$ 2,122,925	\$ 2,618,800	\$ (495,875)	\$ 3,321		\$ 24,374	\$ 2,646,495	\$ 200,000	\$ -	\$ 62,245
Subtotal	\$ 585,000	\$ 122,925	\$ 38,507,925	\$ 41,005,994	\$ (2,498,069)	\$ 60,000	\$ 553,440	\$ 440,301	\$ 42,059,735	\$ 2,500,000	\$ 64,110	\$ 1,356,288
Nursing & Allied Health Campus												
Expansion for Nursing & Allied Health	\$ 375,000		\$ 16,975,000	\$ 17,009,860	\$ (34,860)	\$ 25,584		\$ 195,006	\$ 17,230,450	\$ 1,000,000	\$ 48,380	\$ 566,022
Thermal Plant Expansion			\$ 181,470	\$ 230,788	\$ (49,318)	\$ 274	\$ 378,170	\$ 2,054	\$ 611,286	\$ 50,000	\$ -	\$ 900
Parking & Site Improvements		\$ 321,915	\$ 1,421,915	\$ 2,205,963	\$ (784,048)	\$ 2,142		\$ 16,279	\$ 2,224,384	\$ 120,000	\$ -	\$ 36,194
Subtotal	\$ 375,000	\$ 321,915	\$ 18,578,385	\$ 19,446,611	\$ (868,226)	\$ 28,000	\$ 378,170	\$ 213,339	\$ 20,066,120	\$ 1,170,000	\$ 48,380	\$ 603,116
Technology Campus												
Expansion for Technical & Workforce training programs			\$ 12,000,000	\$ 9,297,546	\$ 2,702,454	\$ 14,115		\$ 137,835	\$ 9,449,496	\$ 850,000	\$ 18,300	\$ 374,227
Parking & Site Improvements (1,793,216 +192,604 = 1,985,820)		\$ 102,575	\$ 752,575	\$ 1,563,574	\$ (810,999)	\$ 885		\$ 8,633	\$ 1,573,092	\$ 75,000	\$ -	\$ 19,959
Subtotal	\$ -	\$ 102,575	\$ 12,752,575	\$ 10,861,120	\$ 1,891,455	\$ 15,000	\$ -	\$ 146,468	\$ 11,022,588	\$ 925,000	\$ 18,300	\$ 394,186
Mid Valley Campus												
Professional & Science Bldg.			\$ 13,500,000	\$ 14,453,388	\$ (953,388)	\$ 28,377		\$ 155,099	\$ 14,636,864	\$ 800,000	\$ 26,858	\$ 449,002
Expansion for Technical & Workforce training programs			\$ 1,750,000	\$ 1,750,000	\$ -	\$ 3,679		\$ 20,095	\$ 1,773,774	\$ 125,000	\$ 3,531	\$ 61,324
Library Expansion		\$ -	\$ 1,750,000	\$ 2,462,776	\$ (712,776)	\$ 3,679		\$ 20,095	\$ 2,486,550	\$ 150,000	\$ 3,661	\$ 62,092
Student Services Bldg. Expansion	\$ 325,000		\$ 2,825,000	\$ 3,850,923	\$ (1,025,923)	\$ 5,939		\$ 32,401	\$ 3,889,263	\$ 750,000	\$ 5,038	\$ 99,843
Thermal Plant Expansion			\$ 3,800,000	\$ 3,896,698	\$ (96,698)	\$ 8,054	\$ 714,200	\$ 42,877	\$ 4,661,829	\$ 275,000	\$ 1,412	\$ 110,605
Parking & Site Improvements		\$ 492,063	\$ 2,492,063	\$ 2,369,777	\$ 122,286	\$ 5,272		\$ 33,638	\$ 2,408,687	\$ 247,915	\$ -	\$ 61,397
Subtotal	\$ 325,000	\$ 492,063	\$ 26,117,063	\$ 28,783,562	\$ (2,666,499)	\$ 55,000	\$ 714,200	\$ 304,205	\$ 29,856,967	\$ 2,347,915	\$ 40,500	\$ 844,263
Starr County Campus												
Health Professionals & Science Ctr. And STEM programs			\$ 8,500,000	\$ 9,521,000	\$ (1,021,000)	\$ 25,985		\$ 94,645	\$ 9,641,630	\$ 550,000	\$ 31,935	\$ 294,243
Expand technical workforce training facilities			\$ 1,600,000	\$ 1,600,000	\$ -	\$ 4,891		\$ 18,397	\$ 1,623,288	\$ 110,000	\$ 6,101	\$ 53,961
Library and renovate existing space for Culteral Arts Center			\$ 2,800,000	\$ 3,700,000	\$ (900,000)	\$ 8,560		\$ 32,175	\$ 3,740,735	\$ 200,000	\$ 10,832	\$ 92,988
Expansion of student services, advising, admissions, and financial services bldg.			\$ 850,000	\$ 1,320,000	\$ (470,000)	\$ 2,598		\$ 9,770	\$ 1,332,368	\$ 75,000	\$ 3,279	\$ 30,473
Expansion of student activities building			\$ 850,000	\$ 1,365,000	\$ (515,000)	\$ 2,598		\$ 9,770	\$ 1,377,368	\$ 75,000	\$ 3,229	\$ 30,935
Thermal Plant Expansion			\$ 3,800,000	\$ 3,911,000	\$ (111,000)	\$ 11,617	\$ 563,901	\$ 43,643	\$ 4,530,161	\$ 300,000	\$ 2,624	\$ 109,321
Parking & Site Improvements (GMP 1 - 119,800)		\$ 226,820	\$ 1,226,820	\$ 3,496,950	\$ (2,270,130)	\$ 3,751		\$ 14,059	\$ 3,514,760	\$ 100,000	\$ -	\$ 30,888
Subtotal	\$ -	\$ 226,820	\$ 19,626,820	\$ 24,913,950	\$ (5,287,130)	\$ 60,000	\$ 563,901	\$ 222,459	\$ 25,760,310	\$ 1,410,000	\$ 58,000	\$ 642,809
Regional Center for Public Safety Excellence - Pharr												
New Regional Center for Publish Safety			\$ 2,800,000	\$ 3,150,000	\$ (350,000)	\$ -		\$ 32,344	\$ 3,182,344	\$ 200,000	\$ 4,800	\$ 99,344
Parking & Site Improvements			\$ 200,000	\$ 700,000	\$ (500,000)	\$ -		\$ 2,185	\$ 702,185	\$ 50,000	\$ -	\$ -
Subtotal	\$ -	\$ -	\$ 3,000,000	\$ 3,850,000	\$ (850,000)	\$ -	\$ -	\$ 34,529	\$ 3,884,529	\$ 250,000	\$ 4,800	\$ 99,344
STC La Joja Teaching Site (Jimmy Carter ECHS)												
Develop STEM labs and entry level workforce training programs			\$ 1,100,000	\$ 1,100,000	\$ -	\$ -		\$ 10,370	\$ 1,110,370	\$ 100,000	\$ 3,000	\$ 35,894
Subtotal	\$ -	\$ -	\$ 1,100,000	\$ 1,100,000	\$ -	\$ -	\$ -	\$ 10,370	\$ 1,110,370	\$ 100,000	\$ 3,000	\$ 35,894
Total	\$ 1,285,000	\$ 1,266,298	\$ 119,682,768	\$ 129,961,237	\$ (10,278,469)	\$ 218,000	\$ 2,209,711	\$ 1,371,671	\$ 133,760,619	\$ 8,702,915	\$ 237,090	\$ 3,975,900

SOUTH TEXAS COLLEGE
2013 Bond Construction Program
Program Budget Summary Spreadsheet
1/11/2017 12:57 PM

2013 Bond Program Budget Summary <i>Facilities Committee Meeting of January 17, 2017</i>		Furniture	Technology	Misc. Cost (1.5 % of CCL)	SUBTOTAL	Explanation for Additional Costs	Total Project Cost Summary			
							Additional Serv.	TOTAL Projected Costs to date	Bond Total Cost	Variance [Total Projected Costs to Bond Total Cost]
Pecan Campus										
North Academic Building	\$ 86,698	\$ 675,000	\$ 1,024,009	\$ 164,265	\$ 13,309,375		\$ 13,309,375	\$ 14,843,110	\$ 1,533,735	
South Academic Building	\$ 54,586	\$ 450,000	\$ 732,589	\$ 110,638	\$ 8,744,609		\$ 8,744,609	\$ 9,454,426	\$ 709,817	
STEM Building	\$ 75,653	\$ 550,000	\$ 681,873	\$ 145,548	\$ 12,875,572		\$ 12,875,572	\$ 13,103,319	\$ 227,747	
Multi-purpose space for student support srvs. & activities	\$ 50,971	\$ 500,000	\$ 311,901	\$ 94,548	\$ 8,559,345		\$ 8,559,345	\$ 8,828,254	\$ 268,909	
Thermal Plant Expansion	\$ 30,998	\$ -	\$ 55,282	\$ 62,910	\$ 5,439,961		\$ 5,439,961	\$ 5,542,049	\$ 102,088	
Parking & Site Improvements (GMP Included Atl. #1 & #2)	\$ 14,378	\$ -	\$ -	\$ 30,366	\$ 2,953,484		\$ 2,953,484	\$ 2,490,261	\$ (463,223)	
Subtotal	\$ 313,284	\$ 2,175,000	\$ 2,805,654	\$ 608,275	\$ 51,882,346		\$ 51,882,346	\$ 54,261,419	\$ 2,379,073	
Nursing & Allied Health Campus										
Expansion for Nursing & Allied Health	\$ 130,743	\$ 820,000	\$ 1,192,881	\$ 250,875	\$ 21,239,351		\$ 21,239,351	\$ 21,773,439	\$ 534,088	
Thermal Plant Expansion	\$ -	\$ -	\$ -	\$ 2,722	\$ 664,908		\$ 664,908	\$ 601,877	\$ (63,031)	
Parking & Site Improvements	\$ 8,360	\$ -	\$ -	\$ 12,616	\$ 2,401,554		\$ 2,401,554	\$ 1,717,717	\$ (683,837)	
Subtotal	\$ 139,103	\$ 820,000	\$ 1,192,881	\$ 266,213	\$ 24,305,813		\$ 24,305,813	\$ 24,093,033	\$ (212,780)	
Technology Campus										
Expansion for Technical & Workforce training programs	\$ 84,197	\$ 600,000	\$ 668,249	\$ 156,193	\$ 12,200,662		\$ 12,200,662	\$ 14,864,990	\$ 2,664,328	
Parking & Site Improvements (1,793,216 +192,604 = 1,985,820)	\$ 6,855	\$ -	\$ -	\$ 27,915	\$ 1,702,821		\$ 1,702,821	\$ 905,324	\$ (797,497)	Includes a grant buy-out savings on Parking & Site
Subtotal	\$ 91,052	\$ 600,000	\$ 668,249	\$ 184,108	\$ 13,903,483		\$ 13,903,483	\$ 15,770,314	\$ 1,866,831	
Mid Valley Campus										
Professional & Science Bldg.	\$ 128,285	\$ 900,000	\$ 992,248	\$ 217,513	\$ 18,150,770		\$ 18,150,770	\$ 17,277,682	\$ (873,088)	
Expansion for Technical & Workforce training programs	\$ 11,096	\$ 100,000	\$ 149,818	\$ 44,956	\$ 2,269,499		\$ 2,269,499	\$ 2,257,363	\$ (12,136)	Approved by Board- Project on Hold 11/22/16
Library Expansion	\$ 10,867	\$ 150,000	\$ 107,559	\$ 35,466	\$ 3,006,195		\$ 3,006,195	\$ 2,288,968	\$ (717,227)	
Student Services Bldg. Expansion	\$ 16,376	\$ 150,000	\$ 157,165	\$ 52,889	\$ 5,120,574	\$347,758 Admiss	\$ 5,120,574	\$ 4,114,228	\$ (1,006,346)	Recommended 7/6/16 Facilities Committee
Thermal Plant Expansion	\$ 28,207	\$ -	\$ 58,748	\$ 56,810	\$ 5,192,611		\$ 5,192,611	\$ 5,042,398	\$ (150,213)	
Parking & Site Improvements	\$ 14,182	\$ -	\$ -	\$ 29,806	\$ 2,761,987		\$ 2,761,987	\$ 2,796,035	\$ 34,048	
Subtotal	\$ 209,013	\$ 1,300,000	\$ 1,465,538	\$ 437,440	\$ 36,501,636		\$ 36,501,636	\$ 33,776,674	\$ (2,724,962)	
Starr County Campus										
Health Professionals & Science Ctr. And STEM programs	\$ 69,998	\$ 600,000	\$ 667,262	\$ 135,615	\$ 11,990,683		\$ 11,990,683	\$ 11,267,182	\$ (723,501)	
Expand technical workforce training facilities	\$ 11,841	\$ 100,000	\$ 78,051	\$ 46,410	\$ 2,029,652	\$750,000 Workfo	\$ 2,029,652	\$ 2,051,983	\$ 22,331	Approved by Board- Project on Hold 11/22/16
Library and renovate existing space for Culteral Arts Center	\$ 19,493	\$ 250,000	\$ 269,378	\$ 51,105	\$ 4,634,531		\$ 4,634,531	\$ 3,732,378	\$ (902,153)	
Expansion of student services, advising, admissions, and financial services bldg.	\$ 5,975	\$ 60,000	\$ 101,372	\$ 17,976	\$ 1,626,443		\$ 1,626,443	\$ 1,162,522	\$ (463,921)	
Expansion of student activities building	\$ 5,831	\$ 60,000	\$ 106,431	\$ 17,516	\$ 1,676,310		\$ 1,676,310	\$ 1,166,402	\$ (509,908)	
Thermal Plant Expansion	\$ 28,207	\$ -	\$ 44,342	\$ 58,665	\$ 5,073,320		\$ 5,073,320	\$ 4,938,772	\$ (134,548)	
Parking & Site Improvements (GMP 1 - 119,800)	\$ 7,135	\$ -	\$ -	\$ 18,558	\$ 3,671,341		\$ 3,671,341	\$ 1,397,789	\$ (2,273,552)	Total includes Alternates 1-3 Only
Subtotal	\$ 148,480	\$ 1,070,000	\$ 1,266,836	\$ 345,845	\$ 30,702,280		\$ 30,702,280	\$ 25,717,028	\$ (4,985,252)	
Regional Center for Public Safety Excellence - Pharr										
New Regional Center for Publish Safety	\$ 22,947	\$ 150,000	\$ 371,977	\$ 42,000	\$ 4,073,412		\$ 4,073,412	\$ 3,655,134	\$ (418,278)	
Parking & Site Improvements	\$ -	\$ -	\$ -	\$ 3,000	\$ 755,185		\$ 755,185	\$ 319,337	\$ (435,848)	
Subtotal	\$ 22,947	\$ 150,000	\$ 371,977	\$ 45,000	\$ 4,828,597		\$ 4,828,597	\$ 3,974,471	\$ (854,126)	
STC La Joja Teaching Site (Jimmy Carter ECHS)										
Develop STEM labs and entry level workforce training programs	\$ 8,292	\$ 50,000	\$ 249,100	\$ 16,500	\$ 1,573,156		\$ 1,573,156	\$ 1,436,000	\$ (137,156)	
Subtotal	\$ 8,292	\$ 50,000	\$ 249,100	\$ 16,500	\$ 1,573,156		\$ 1,573,156	\$ 1,436,000	\$ (137,156)	
Total	\$ 932,171	\$ 6,165,000	\$ 8,020,235	\$ 1,903,381	\$ 163,697,311		\$ 163,697,311	\$ 159,028,939	\$ (4,668,372)	Added \$384,219 to Misc. Expense (7/1/16)

**South Texas College
Non-Bond Commitments and Expenditures
As of January 17, 2016**

I. Non Bond Commitments				
Project Name - Item Description	Approved Board Dates	Board Approved Expenditures	Not Board Approved Projected Expenditures	Actual GMP/Projected Expenditures
Nursing & Allied Health Campus				
Nursing & Allied Health Campus Thermal Plant				
1 Thermal Plant - Design	10/27/2015	\$ 112,200	\$ -	\$ 112,200
2 Thermal Plant - Construction	11/22/2016	2,867,847	-	2,867,847
3 Thermal Plant - Miscellaneous	10/27/2015	26,000		26,000
4 Thermal Plant - FFE and Technology			60,000	60,000
Nursing & Allied Health Campus Thermal Plant Parking and Site Improvements				
5 Thermal Plant Parking and Site Improvement - Design	10/27/2015	12,000	-	12,000
6 Thermal Plant Parking and Site Improvement - Construction	11/22/2016	229,010	-	229,010
7 Thermal Plant Parking and Site Improvement - Miscellaneous	10/27/2015	5,000	-	5,000
NAH Campus Subtotal		\$ 3,252,057	\$ 60,000	\$ 3,312,057
Mid Valley Campus				
Mid Valley Campus Library Retrofit				
8 Library Retrofit - Design	10/27/2015	\$ 138,213		\$ 138,213
9 Library Retrofit - Construction	11/22/2016	1,123,682		1,123,682
10 Library Retrofit - Miscellaneous	10/27/2015	6,000		6,000
11 Library Retrofit - FFE and Technology			520,000	520,000
Mid Valley Campus Workforce Restroom Retrofit				
12 Workforce Restroom Retrofit		-	100,000	100,000
Mid Valley Campus Subtotal		\$ 1,267,895	\$ 620,000	\$ 1,887,895
Starr County Campus				
13 Workforce Restroom Retrofit		\$ -	\$ 180,000	\$ 180,000
Starr County Campus Subtotal		\$ -	\$ 180,000	\$ 180,000
Regional Center for Public Safety Excellence				
14 Parking and Site Improvements - Design	1/26/2016	\$ 85,000		\$ 85,000
15 Parking and Site Improvements - Construction and Miscellaneous			\$ 915,000	\$ 915,000
Regional Center for Public Safety Excellence Subtotal		\$ 85,000	\$ 915,000	\$ 1,000,000
Total Non-Bond Expenditures		\$ 4,604,952	\$ 1,775,000	\$ 6,379,952

II. Bond Program Budget Deficits - Board Approved - as of December 6, 2016				
<small>(Includes deficits realized after use of Program Contingency Amount)</small>				
Project Name - Item Description	Approved Board Dates	Bond Program Deficits (Savings)		Total Bond & Non Bond
		Bond Budget	Non-Bond Budget	
1 Mid Valley Campus Thermal Plant Alternate 1 & 2	4/26/2016	\$ -	\$ 718,947	\$ 718,947
2 Starr County Campus Thermal Plant Alternate	6/28/2016	-	788,305	788,305
3 Pecan Parking and Site Improvements Contingency Variance	9/27/2016	171,819	-	171,819
4 NAH Campus Parking and Site Improvements GMP Variance	10/27/2016	784,048	-	784,048
5 Starr County Campus Library Expansion GMP Variance	10/27/2016	900,000	-	900,000
6 NAH Campus Thermal Plant GMP Variance	11/22/2016	230,788	-	230,788
7 Starr County Campus Student Services GMP Variance	11/22/2016	470,000	-	470,000
8 Starr County Campus Student Activities GMP Variance	11/22/2016	515,000	-	515,000
9 Mid Valley Campus Library Expansion GMP Variance	11/22/2016	712,776	-	712,776
10 Tech Campus Southwest Renovation Building Deductive Change Order	11/22/2016	(1,115,311)	-	(1,115,311)
11 Starr County Campus Parking and Site Improvement GMP Variance w/ Alternates	11/22/2016	2,270,130	-	2,270,130
12 Pecan Campus North Academic Building Buyout Savings	12/13/2016	(720,878)	-	(720,878)
13 Tech Campus Parking & Site Improvements Buyout Savings	12/13/2016	(400,000)	-	(400,000)
Total Non Bond Funds Required to Cover Bond Budget Deficits		\$ 3,818,372	\$ 1,507,252	\$ 5,325,624

III. Bond Program Budget Deficits - Not Board Approved - as of January 17, 2017				
Project Name - Item Description	Proposed Board Dates	Proposed Bond Budget Deficits (Savings)	Proposed Non-Bond Budget Deficits (Savings)	Total Proposed Bond & Non Bond Deficits
Total Non Bond Funds Required to Cover Bond Budget Deficits		\$ -	\$ -	\$ -

Total Non Bond Expenditures (I, II, and III)	\$ 3,818,372	\$ 7,887,204	\$ 11,705,576
---	---------------------	---------------------	----------------------

IV. Additional Projected Deficits CCL/GMP			
Item Description	Proposed Bond Budget Deficits	Non-Bond Budget Deficits	Total Deficits
Additional Projected Deficits CCL/GMP - per Broadus and Associates	\$ 850,000	\$ -	\$ 850,000

Grand Total Non Bond Expenditures (I, II, III, and IV)	\$ 4,668,372	\$ 7,887,204	\$ 12,555,576
---	---------------------	---------------------	----------------------

**South Texas College
2013 Bond Construction Program
Tracking Contingency Log**

#	Item Description	Budget Variance	Contingency Balance
1	Original Contingency Balance	\$ -	\$ 9,978,348
Approved GMPs			
2	Pecan Campus North Academic GMP Variance	\$ (451,000)	\$ 9,527,348
3	Pecan South Academic GMP Variance	\$ 142,166	\$ 9,669,514
4	Pecan STEM Bldg. GMP Variance	\$ (1,917,059)	\$ 7,752,455
5	Pecan Campus Student Services GMP Variance	\$ (603,179)	\$ 7,149,276
6	Pecan Thermal Energy Plant GMP Variance	\$ 106,000	\$ 7,255,276
7	Pecan Parking and Site Improvements GMP Variance	\$ (495,875)	\$ 6,759,401
8	NAH Campus Expansion GMP Variance	\$ (34,860)	\$ 6,724,541
9	NAH Campus Parking and Site Improvements GMP Variance	\$ (784,048)	\$ 5,940,493
10	Technology Campus Renovation GMP Variance	\$ 1,466,413	\$ 7,406,906
11	Technology Campus Site & Parking GMP Variance	\$ (1,335,820)	\$ 6,071,086
12	Technology Campus Site & Parking IT Duct Bank	\$ 102,575	\$ 6,173,661
13	Mid Valley Health Professions GMP Variance	\$ (953,388)	\$ 5,220,273
14	Mid Valley Student Services Building Expansion GMP Variance	\$ (1,025,923)	\$ 4,194,350
15	Mid Valley Thermal Energy Plant GMP Variance	\$ (96,698)	\$ 4,097,652
16	Mid Valley Parking & Site Improvements GMP Variance	\$ 122,286	\$ 4,219,938
17	Change Order - Mid Valley Thermal Plant	\$ 109,376	\$ 4,329,314
18	Change Order - Mid Valley Parking and Site Improvements	\$ (109,376)	\$ 4,219,938
19	Starr County Campus Health Professions GMP Variance	\$ (1,021,000)	\$ 3,198,938
20	Starr County Campus Library Expansion GMP Variance	\$ (900,000)	\$ 2,298,938
21	Starr County Thermal Energy Plant GMP Variance	\$ (111,000)	\$ 2,187,938
22	Starr County Campus Student Services GMP Variance	\$ (470,000)	\$ 1,717,938
23	Starr County Campus Student Activities GMP Variance	\$ (515,000)	\$ 1,202,938
24	NAH Campus Thermal Plant (Bond Funded) GMP Variance	\$ (230,788)	\$ 972,150
25	Mid Valley Campus Library Expansion GMP Variance	\$ (712,776)	\$ 259,374
26	Starr County Campus Parking and Site Improvements GMP Variance with Alternates	\$ (2,270,130)	\$ (2,010,756)
Deductive Change Orders - Buyout Savings			
27	Deductive Change Orders-Tech Campus Renovation	\$ 120,730	\$ (1,890,026)
28	Deductive Change Orders-Tech Campus Parking & Site	\$ 22,246	\$ (1,867,780)
29	Deductive Change Orders-Tech Campus Renovation	\$ 1,115,311	\$ (752,469)
30	Deductive Change Orders-North Academic	\$ 720,878	\$ (31,591)
31	Deductive Change Orders-Tech Parking & Site Improvements	\$ 400,000	\$ 368,409
Other Expenditures			
27	A/E Fees	\$ 2,992,085	\$ 3,360,494
28	Chillers Procurement	\$ (2,209,711)	\$ 1,150,783
29	CMR Preconstruction Services for all projects	\$ (218,000)	\$ 932,783
30	B&A Reimbursable Expense for Travel	\$ (900)	\$ 931,883
31	B&A Additional Services - Includes AV/IT, Wage Scale Survey, BIM FM, Traffic Study	\$ (932,171)	\$ (288)
32	FF&E- Portion used for Consultant Fees	\$ 66,186	\$ 65,898
33	FF&E Consultant-Not in Original Amount	\$ (237,090)	\$ (171,192)
34	Technology	\$ 703,422	\$ 532,230
35	IT Duct bank-Not in Original Scope	\$ (1,266,298)	\$ (734,068)
36	Fixed Kitchen Equipment-Not in Original Scope	\$ (1,285,000)	\$ (2,019,068)
37	OCIP	\$ (1,371,671)	\$ (3,390,739)
37	Miscellaneous Expense Increase	\$ (427,633)	\$ (3,818,372)
Current and Additional Projected Liability Exposure			
40	Current Program Contingency Balance	\$ -	\$ (3,818,372)
41	Mid Valley Workforce Training Center Expansion GMP Variance	\$ -	\$ (3,818,372)
42	Starr County Campus Workforce Training Center Expansion GMP Variance	\$ -	\$ (3,818,372)
44	Regional Center for Public Safety Excellence GMP Variance	\$ (350,000)	\$ (4,168,372)
45	Regional Center for Public Safety Excellence Parking and Site GMP Variance	\$ (500,000)	\$ (4,668,372)
46	La Joya Center Teaching Site GMP Variance	\$ -	\$ (4,668,372)
47	Projected Program Contingency Balance		\$ (4,668,372)

161018 - STC Bond Program - Master Program Schedule

DATE: 18-Oct-16

Activity ID	Activity Name	Original Duration	Start	Finish	Gantt Chart																																																						
					2014												2015												2016												2017												2018						
161018 - STC Bond Program - Master Program Schedule					1554d	01-Nov-13 A	01-Feb-18	01-Feb-18, 161018 - STC B																																																			
PECAN CAMPUS					1543d	01-Nov-13 A	22-Jan-18	22-Jan-18, PECAN CAMPUS																																																			
Pecan Campus North Academic Building (Project 1 -RG) PRIORITY PROJECT SPRING 2018					1543d	01-Nov-13 A	22-Jan-18	22-Jan-18, Pecan Campus N																																																			
A1000	Successful Bond Election	22d	01-Nov-13 A	03-Dec-13 A	v-13 A	03-Dec-13 A,																																																					
A1010	Solicitation & Approval of Program Management Consultant	21d	01-Jun-14 A	01-Jul-14 A		01-Jun-14 A	01-Jul-14 A,																																																				
A1020	Solicitation & Approval of Architects / Engineers	20d	22-Aug-14 A	24-Feb-15 A		22-Aug-14 A	24-Feb-15 A,																																																				
A1030	Design Phase	239d	24-Apr-15 A	01-Jul-16 A		24-Apr-15 A	01-Jul-16 A,																																																				
A1040	Solicitation & Approval of GMP	89d	24-May-16 A	28-Jun-16 A		24-May-16 A	28-Jun-16 A,																																																				
A1050	Construction Phase 11 Mo. Proposed - 11 Mo. Actual	362d	03-Aug-16 A	20-Sep-17		03-Aug-16 A	20-Sep-17,																																																				
A5320	TCO / Floor	0d		14-Aug-17*			14-Aug-17*																																																				
A5330	Building FF&E Make Ready	120d	17-Aug-17	14-Dec-17		17-Aug-17	14-Dec-17,																																																				
A5340	Final Completion for Move In	0d		08-Jan-18*			08-Jan-18*																																																				
A5350	Faculty Start	0d	15-Jan-18*				15-Jan-18*																																																				
A5360	Classes Begin	0d	22-Jan-18*				22-Jan-18*																																																				
Pecan Campus South Academic Building (Project 2 -RG) PRIORITY PROJECT SPRING 2018					938d	01-Nov-13 A	22-Jan-18	22-Jan-18, Pecan Campus S																																																			
A1060	Successful Bond Election	21d	01-Nov-13 A	03-Dec-13 A	v-13 A	03-Dec-13 A,																																																					
A1070	Solicitation & Approval of Program Management Consultant	21d	01-Jun-14 A	01-Jul-14 A		01-Jun-14 A	01-Jul-14 A,																																																				
A1080	Solicitation & Approval of Architects / Engineers	20d	22-Aug-14 A	24-Feb-15 A		22-Aug-14 A	24-Feb-15 A,																																																				
A1090	Design Phase	284d	24-Apr-15 A	01-Sep-16 A		24-Apr-15 A	01-Sep-16 A,																																																				
A1100	Solicitation & Approval of GMP	65d	23-Jun-16 A	23-Aug-16 A		23-Jun-16 A	23-Aug-16 A,																																																				
A1110	Construction Phase 11 Mo. Proposed - 11 Mo. Actual	358d	24-Aug-16 A	15-Sep-17		24-Aug-16 A	15-Sep-17, cost																																																				
A5370	TCO / Floor	0d		15-Sep-17*			15-Sep-17*																																																				
A5380	Building FF&E Make Ready	99d	17-Sep-17	24-Dec-17		17-Sep-17	24-Dec-17,																																																				
A5390	Final Completion for Move In	0d		24-Dec-17*			24-Dec-17*																																																				
A5400	Faculty Start	0d	03-Jan-18*				03-Jan-18*																																																				
A5410	Classes Begin	0d	22-Jan-18*				22-Jan-18*																																																				
Pecan Campus STEM Building (Project 3 -RG) PRIORITY PROJECT SPRING 2018					938d	01-Nov-13 A	22-Jan-18	22-Jan-18, Pecan Campus S																																																			
A1120	Successful Bond Election	21d	01-Nov-13 A	03-Dec-13 A	v-13 A	03-Dec-13 A,																																																					
A1130	Solicitation & Approval of Program Management Consultant	21d	01-Jun-14 A	01-Jul-14 A		01-Jun-14 A	01-Jul-14 A,																																																				
A1140	Solicitation & Approval of Architects / Engineers	20d	22-Aug-14 A	24-Feb-15 A		22-Aug-14 A	24-Feb-15 A,																																																				
A1150	Design Phase	348d	16-Feb-15 A	01-Sep-16 A		16-Feb-15 A	01-Sep-16 A,																																																				
A1160	Solicitation & Approval of GMP	79d	23-Jun-16 A	23-Aug-16 A		23-Jun-16 A	23-Aug-16 A,																																																				
A1170	Construction Phase 14 Mo Proposed - 15 Mo Actual	419d	24-Aug-16 A	15-Nov-17		24-Aug-16 A	15-Nov-17, cost																																																				
A5420	TCO / Floor	0d		15-Nov-17*			15-Nov-17*																																																				
A5430	Building FF&E Make Ready	38d	17-Nov-17	24-Dec-17		17-Nov-17	24-Dec-17,																																																				
A5440	Final Completion for Move In	0d		24-Dec-17*			24-Dec-17*																																																				
A5450	Faculty Start	0d	03-Jan-18*				03-Jan-18*																																																				
A5460	Classes Begin	0d	22-Jan-18*				22-Jan-18*																																																				
Pecan Campus Student Support Services and Activities Building (Project 4 -RG)					938d	01-Nov-13 A	22-Jan-18	22-Jan-18, Pecan Campus S																																																			
A1180	Successful Bond Election	21d	01-Nov-13 A	03-Dec-13 A	v-13 A	03-Dec-13 A,																																																					
A1190	Solicitation & Approval of Program Management Consultant	21d	01-Jun-14 A	01-Jul-14 A		01-Jun-14 A	01-Jul-14 A,																																																				
A1200	Solicitation & Approval of Architects / Engineers	20d	22-Aug-14 A	24-Feb-15 A		22-Aug-14 A	24-Feb-15 A,																																																				
A1210	Design Phase	215d	30-Apr-15 A	30-Sep-16 A		30-Apr-15 A	30-Sep-16 A,																																																				
A1220	Solicitation & Approval of GMP	197d	03-May-16 A	14-Sep-16 A		03-May-16 A	14-Sep-16 A,																																																				
A1230	Construction Phase 11 Mo Proposed - 12 Mo Actual (10.20.17)	327d	19-Sep-16 A	20-Dec-17		19-Sep-16 A	20-Dec-17, cost																																																				
A5520	TCO / Floor	0d		05-Dec-17*			05-Dec-17*																																																				
A5530	Building FF&E Make Ready	17d	08-Dec-17	24-Dec-17		08-Dec-17	24-Dec-17,																																																				
A5540	Final Completion for Move In	0d		24-Dec-17*			24-Dec-17*																																																				

Date	Revision	Checked	Approved



161018 - STC Bond Program - Master Program Schedule

DATE: 18-Oct-16

Activity ID	Activity Name	Original Duration	Start	Finish	2014												2015												2016												2017												2018																							
					A	S	O	N	D	J	F	M	A	M	J	J	A	S	O	N	D	J	F	M	A	M	J	J	A	S	O	N	D	J	F	M	A	M	J	J	A	S	O	N	D	J	F	M	A	M	J	J	A	S	O	N	D	J	F	M	A	M	J	J	A	S	O	N	D	J	F	M	A	M	J	J
A5620	TCO / Floor	0d		03-Jul-17*																																																																								
A5630	Building FF&E Make Ready	42d	05-Jul-17	15-Aug-17																																																																								
A5640	Final Completion for Move In	0d		15-Aug-17*																																																																								
A5650	Faculty Start	0d	21-Aug-17*																																																																									
A5660	Classes Begin	0d	28-Aug-17*																																																																									
Mid Valley Campus Workforce Training Center Expansion (Project 13 -DG)																																																																												
A2500	Successful Bond Election	21d	01-Nov-13 A	03-Dec-13 A																																																																								
A2510	Solicitation & Approval of Program Management Consultant	21d	01-Jun-14 A	01-Jul-14 A																																																																								
A2520	Solicitation & Approval of Architects / Engineers	20d	22-Aug-14 A	24-Feb-15 A																																																																								
A2530	Design Phase	266d	20-Mar-15 A	21-Nov-16																																																																								
A2540	Solicitation & Approval of GMP	54d	01-Jun-16 A	15-Oct-16																																																																								
A2550	Construction Phase <i>Pending due to budget issues - remove from CM@R</i>	311d	22-Oct-16*	28-Aug-17																																																																								
A5670	TCO / Floor	0d		03-Jul-17*																																																																								
A5680	Building FF&E Make Ready	42d	05-Jul-17	15-Aug-17																																																																								
A5690	Final Completion for Move In	0d		15-Aug-17*																																																																								
A5700	Faculty Start	0d	21-Aug-17*																																																																									
A5710	Classes Begin	0d	28-Aug-17*																																																																									
Mid Valley Campus Thermal Plant (Project 15 -DG)																																																																												
A1840	Successful Bond Election	21d	01-Nov-13 A	03-Dec-13 A																																																																								
A1850	Solicitation & Approval of Program Management Consultant	21d	01-Jun-14 A	01-Jul-14 A																																																																								
A1860	Solicitation & Approval of Architects / Engineers	20d	22-Aug-14 A	24-Feb-15 A																																																																								
A1870	Design Phase	199d	27-Apr-15 A	15-May-16 A																																																																								
A1880	Solicitation & Approval of GMP	57d	01-Mar-16 A	26-Apr-16 A																																																																								
A1890	Construction Phase	244d	01-Jun-16 A	27-Mar-17																																																																								
Mid Valley Campus Parking and Site Improvements (Project 16 -DG)																																																																												
A1790	Solicitation & Approval of Program Management Consultant	21d	01-Jun-14 A	01-Jul-14 A																																																																								
A1800	Solicitation & Approval of Architects / Engineers	20d	22-Aug-14 A	24-Feb-15 A																																																																								
A1810	Design Phase	223d	18-May-15 A	15-May-16 A																																																																								
A1820	Solicitation & Approval of GMP	54d	01-Mar-16 A	26-Apr-16 A																																																																								
A1830	Construction Phase <i>7 Mo. Proposed -</i>	456d	01-May-16 A	08-Aug-17																																																																								
STARR COUNTY CAMPUS																																																																												
Starr County Campus Health Professions & Science Bldg. (Project 17 -RG) PRIORITY PROJECT FALL 2017																																																																												
A1720	Successful Bond Election	21d	01-Nov-13 A	03-Dec-13 A																																																																								
A1730	Solicitation & Approval of Program Management Consultant	21d	01-Jun-14 A	01-Jul-14 A																																																																								
A1740	Solicitation & Approval of Architects / Engineers	20d	22-Aug-14 A	24-Feb-15 A																																																																								
A1750	Design Phase	324d	20-Feb-15 A	29-Jul-16 A																																																																								
A1760	Solicitation & Approval of GMP	0d	26-Aug-16 A	27-Sep-16 A																																																																								
A1770	Construction Phase <i>12 Mo Proposed - 14 Mo Actual</i>	376d	03-Oct-16 A	15-Oct-17																																																																								
A1950	Building FF&E Make Ready	45d	02-Jul-17	15-Aug-17																																																																								
A1780	TCO / Floor	0d		02-Jul-17*																																																																								
A1960	Final Completion for Move In	0d		15-Aug-17*																																																																								
A1970	Faculty Start	0d	21-Aug-17*																																																																									
A1980	Classes Begin	0d	28-Aug-17*																																																																									
Starr County Campus New library (Project 18 -RG)																																																																												
A1660	Successful Bond Election	21d	01-Nov-13 A	03-Dec-13 A																																																																								
A1670	Solicitation & Approval of Program Management Consultant	21d	01-Jun-14 A	01-Jul-14 A																																																																								
A1680	Solicitation & Approval of Architects / Engineers	20d	22-Aug-14 A	24-Feb-15 A																																																																								
A1690	Design Phase	289d	10-Apr-15 A	09-Sep-16 A																																																																								
A1700	Solicitation & Approval of GMP	21d	05-Oct-16 A	25-Oct-16																																																																								

Construction duration must improve 2.5 mo. to meeting a 2017 Fall Semester

Date	Revision	Checked	Approved

161018 - STC Bond Program - Master Program Schedule

DATE: 18-Oct-16

Activity ID	Activity Name	Original Duration	Start	Finish	Gantt Chart																																																																
					2014													2015													2016													2017													2018												
					A	S	O	N	D	J	F	M	A	M	J	J	A	S	O	N	D	J	F	M	A	M	J	J	A	S	O	N	D	J	F	M	A	M	J	J	A	S	O	N	D	J	F	M	A	M	J	J	A	S	O	N	D	J	F	M	A	M	J	J	A	S	O	N	D
A1710	Construction Phase 11 Mo Proposed -	305d	01-Nov-16*	01-Sep-17	[Gantt bar from 01-Nov-16* to 01-Sep-17]																																																																
A5720	TCO / Floor	0d		17-Jul-17*	◆ TCO / Floor																																																																
A5730	Building FF&E Make Ready	28d	19-Jul-17	15-Aug-17	19-Jul-17 [Green bar] 15-Aug-17																																																																
A5740	Final Completion for Move In	0d		15-Aug-17*	◆ Final Completion for Move In																																																																
A5750	Faculty Start	0d	21-Aug-17*		◆ Faculty Start																																																																
A5760	Classes Begin	0d	28-Aug-17*		◆ Classes Begin																																																																
Starr County Campus Student Activities Building Expansion (Project 21 -RG)					▶ 01-Sep-17, Starr County Campus Student																																																																
A2620	Successful Bond Election	21d	01-Nov-13 A	03-Dec-13 A	v-13 A [Blue bar] 03-Dec-13 A																																																																
A2630	Solicitation & Approval of Program Management Consultant	21d	01-Jun-14 A	01-Jul-14 A	01-Jun-14 A [Blue bar] 01-Jul-14 A																																																																
A2640	Solicitation & Approval of Architects / Engineers	20d	22-Aug-14 A	24-Feb-15 A	22-Aug-14 A [Blue bar] 24-Feb-15 A																																																																
A2650	Design Phase	286d	20-Mar-15 A	15-Nov-16	20-Mar-15 A [Blue bar] 15-Nov-16																																																																
A2660	Solicitation & Approval of GMP	22d	21-Oct-16*	21-Nov-16	21-Oct-16* [Green bar] 21-Nov-16																																																																
A2670	Construction Phase 11 Mo. Proposed -	202d	22-Nov-16*	01-Sep-17	22-Nov-16* [Green bar] 01-Sep-17																																																																
A5770	TCO / Floor	0d		25-Jul-17*	◆ TCO / Floor																																																																
A5780	Building FF&E Make Ready	20d	27-Jul-17	15-Aug-17	27-Jul-17 [Green bar] 15-Aug-17																																																																
A5790	Final Completion for Move In	0d		15-Aug-17*	◆ Final Completion for Move In																																																																
A5800	Faculty Start	0d	21-Aug-17*		◆ Faculty Start																																																																
A5810	Classes Begin	0d	28-Aug-17*		◆ Classes Begin																																																																
Starr County Campus Student Service Building Expansion (Project 20 -RG)					▶ 01-Sep-17, Starr County Campus Student																																																																
A1540	Successful Bond Election	21d	01-Nov-13 A	03-Dec-13 A	v-13 A [Blue bar] 03-Dec-13 A																																																																
A1550	Solicitation & Approval of Program Management Consultant	21d	01-Jun-14 A	01-Jul-14 A	01-Jun-14 A [Blue bar] 01-Jul-14 A																																																																
A1560	Solicitation & Approval of Architects / Engineers	20d	22-Aug-14 A	24-Feb-15 A	22-Aug-14 A [Blue bar] 24-Feb-15 A																																																																
A1570	Design Phase	266d	20-Mar-15 A	03-Nov-16	20-Mar-15 A [Blue bar] 03-Nov-16																																																																
A5110	SD Approval	0d		13-Jul-15 A	◆ SD Approval																																																																
A1580	Solicitation & Approval of GMP	159d	20-Nov-15 A	04-Nov-16	20-Nov-15 A [Blue bar] 04-Nov-16																																																																
A1590	Construction Phase 11 Mo Proposed -	299d	07-Nov-16*	01-Sep-17	07-Nov-16* [Green bar] 01-Sep-17																																																																
A5820	TCO / Floor	0d		25-Jul-17*	◆ TCO / Floor																																																																
A5830	Building FF&E Make Ready	20d	27-Jul-17	15-Aug-17	27-Jul-17 [Green bar] 15-Aug-17																																																																
A5840	Final Completion for Move In	0d		15-Aug-17*	◆ Final Completion for Move In																																																																
A5850	Faculty Start	0d	21-Aug-17*		◆ Faculty Start																																																																
A5860	Classes Begin	0d	28-Aug-17*		◆ Classes Begin																																																																
Starr County Campus Workforce Training Center Expansion (Project 19 -DG)					▶ 01-Sep-17, Starr County Campus Workfor																																																																
A1600	Successful Bond Election	21d	01-Nov-13 A	03-Dec-13 A	v-13 A [Blue bar] 03-Dec-13 A																																																																
A1610	Solicitation & Approval of Program Management Consultant	21d	01-Jun-14 A	01-Jul-14 A	01-Jun-14 A [Blue bar] 01-Jul-14 A																																																																
A1620	Solicitation & Approval of Architects / Engineers	20d	22-Aug-14 A	24-Feb-15 A	22-Aug-14 A [Blue bar] 24-Feb-15 A																																																																
A1630	Design Phase	266d	20-Mar-15 A	14-Nov-16	20-Mar-15 A [Blue bar] 14-Nov-16																																																																
A1640	Approval of GMP	11d	15-Oct-16	25-Oct-16	15-Oct-16 [Green bar] 25-Oct-16																																																																
A1650	Construction Phase Pending due to budget issues - remove from CM@R	305d	01-Nov-16	01-Sep-17	01-Nov-16 [Green bar] 01-Sep-17																																																																
A5870	TCO / Floor	0d		25-Jul-17*	◆ TCO / Floor																																																																
A5880	Building FF&E Make Ready	20d	27-Jul-17	15-Aug-17	27-Jul-17 [Green bar] 15-Aug-17																																																																
A5890	Final Completion for Move In	0d		15-Aug-17*	◆ Final Completion for Move In																																																																
A5900	Faculty Start	0d	21-Aug-17*		◆ Faculty Start																																																																
A5910	Classes Begin	0d	28-Aug-17*		◆ Classes Begin																																																																
Starr County Campus Thermal Plant (Project 22 -RG)					▶ 03-Jul-17, Starr County Campus Thermal Plant																																																																
A1420	Successful Bond Election	21d	01-Nov-13 A	03-Dec-13 A	v-13 A [Blue bar] 03-Dec-13 A																																																																
A1430	Solicitation & Approval of Program Management Consultant	21d	01-Jun-14 A	01-Jul-14 A	01-Jun-14 A [Blue bar] 01-Jul-14 A																																																																
A1440	Solicitation & Approval of Architects / Engineers	20d	27-Jan-15 A	24-Feb-15 A	27-Jan-15 A [Blue bar] 24-Feb-15 A																																																																
A1450	Design Phase	205d	04-Jun-15 A	29-Jul-16 A	04-Jun-15 A [Blue bar] 29-Jul-16 A																																																																

Date	Revision	Checked	Approved



161018 - STC Bond Program - Master Program Schedule

DATE: 18-Oct-16

Activity ID	Activity Name	Original Duration	Start	Finish	Gantt Chart																																																																
					2014													2015													2016													2017													2018												
					A	S	O	N	D	J	F	M	A	M	J	J	A	S	O	N	D	J	F	M	A	M	J	J	A	S	O	N	D	J	F	M	A	M	J	J	A	S	O	N	D	J	F	M	A	M	J	J	A	S	O	N	D	J	F	M	A	M	J	J	A	S	O	N	D
A1460	Solicitation & Approval of GMP	96d	03-May-16 A	28-Jun-16 A	03-May-16 A 28-Jun-16 A																																																																
A1470	Construction Phase 11 mo Proposed -	272d	01-Sep-16 A	03-Jul-17	01-Sep-16 A 03-Jul-17																																																																
Starr County Campus Parking and Site Improvements (Project 23 -RG)					01-Sep-17, Starr County Campus Parking																																																																
A1360	Successful Bond Election	21d	01-Nov-13 A	03-Dec-13 A	v-13 A 03-Dec-13 A																																																																
A1370	Solicitation & Approval of Program Management Consultant	21d	01-Jun-14 A	01-Jul-14 A	01-Jun-14 A 01-Jul-14 A																																																																
A1380	Solicitation & Approval of Architects / Engineers	20d	27-Jan-15 A	24-Feb-15 A	27-Jan-15 A 24-Feb-15 A																																																																
A1390	Design Phase	230d	04-Jun-15 A	31-Aug-16 A	04-Jun-15 A 31-Aug-16 A																																																																
A1400	Solicitation & Approval of GMP	0d	26-Aug-16 A	17-Oct-16	26-Aug-16 A 17-Oct-16																																																																
A1410	Construction Phase 10 Mo. Proposed -	305d	01-Nov-16*	01-Sep-17	01-Nov-16* 01-Sep-17																																																																
NURSING & ALLIED CAMPUS					22-Jan-18, NURSING & ALLIED CAMPUS																																																																
Nursing and Allied Health Campus Expansion (Project 7 -DG) PRIORITY PROJECT SPRING 2018					22-Jan-18, Nursing and Allied Health																																																																
A2320	Successful Bond Election	21d	01-Nov-13 A	03-Dec-13 A	v-13 A 03-Dec-13 A																																																																
A2330	Solicitation & Approval of Program Management Consultant	21d	01-Jun-14 A	01-Jul-14 A	01-Jun-14 A 01-Jul-14 A																																																																
A2340	Solicitation & Approval of Architects / Engineers	20d	22-Aug-14 A	24-Feb-15 A	22-Aug-14 A 24-Feb-15 A																																																																
A2350	Design Phase	311d	13-Feb-15 A	03-Jun-16 A	13-Feb-15 A 03-Jun-16 A																																																																
A2360	Solicitation & Approval of GMP	54d	14-Jun-16 A	26-Jul-16 A	14-Jun-16 A 26-Jul-16 A																																																																
A2370	Construction Phase 14 Mo Proposed - 18 Mo Actual	581d	15-Jun-16 A	01-Dec-17	15-Jun-16 A 01-Dec-17, cost																																																																
A5170	TCO / Floor	0d		01-Dec-17*	01-Dec-17, cost																																																																
A5180	Building FF&E Make Ready	22d	03-Dec-17	24-Dec-17	03-Dec-17 24-Dec-17																																																																
A5190	Final Completion for Move In	0d		24-Dec-17*	Final Completion for Move In																																																																
A5200	Faculty Start	0d	03-Jan-18*		Faculty Start																																																																
A5210	Classes Begin	0d	22-Jan-18*		Classes Begin																																																																
Nursing and Allied Health Campus Parking and Site Improvements (Project 8 -DG)					01-Nov-17, Nursing and Allied Health																																																																
A2260	Successful Bond Election	21d	01-Nov-13 A	03-Dec-13 A	v-13 A 03-Dec-13 A																																																																
A2270	Solicitation & Approval of Program Management Consultant	21d	01-Jun-14 A	01-Jul-14 A	01-Jun-14 A 01-Jul-14 A																																																																
A2280	Solicitation & Approval of Architects / Engineers	65d	22-Aug-14 A	24-Feb-15 A	22-Aug-14 A 24-Feb-15 A																																																																
A2290	Design Phase	258d	27-Apr-15 A	24-Feb-16 A	27-Apr-15 A 24-Feb-16 A																																																																
A2300	Solicitation & Approval of GMP	54d	22-Jun-16 A	25-Oct-16	22-Jun-16 A 25-Oct-16																																																																
A2310	Construction Phase 8 Mo Proposed - 12 Actual	365d	02-Nov-16*	01-Nov-17	02-Nov-16* 01-Nov-17, cost																																																																
TECHNOLOGY CAMPUS					28-Aug-17, TECHNOLOGY CAMPUS																																																																
Technology Campus Southwest Building Renovation (Project 9 -DG) PRIORITY PROJECT FALL 2017					28-Aug-17, Technology Campus Southwest																																																																
A2200	Successful Bond Election	21d	01-Nov-13 A	03-Dec-13 A	v-13 A 03-Dec-13 A																																																																
A2210	Solicitation & Approval of Program Management Consultant	21d	01-Jun-14 A	01-Jul-14 A	01-Jun-14 A 01-Jul-14 A																																																																
A2220	Solicitation & Approval of Architects / Engineers	20d	22-Aug-14 A	24-Feb-15 A	22-Aug-14 A 24-Feb-15 A																																																																
A2230	Design Phase	309d	20-Mar-15 A	29-Jul-16 A	20-Mar-15 A 29-Jul-16 A																																																																
A2240	Solicitation & Approval of GMP	85d	01-Jun-16 A	29-Jun-16 A	01-Jun-16 A 29-Jun-16 A																																																																
A2250	Construction Phase 12 Mo Proposed - 12 Actual	315d	15-Aug-16 A	15-Aug-17	15-Aug-16 A 15-Aug-17																																																																
A5270	TCO / Floor	0d		01-Jul-17*	TCO / Floor																																																																
A5280	Building FF&E Make Ready	44d	03-Jul-17	15-Aug-17	03-Jul-17 15-Aug-17																																																																
A5290	Final Completion for Move In	0d		15-Aug-17*	Final Completion for Move In																																																																
A5300	Faculty Start	0d	21-Aug-17*		Faculty Start																																																																
A5310	Classes Begin	0d	28-Aug-17*		Classes Begin																																																																
Technology Campus Parking and Site Improvements (Project 10 -DG)					28-Aug-17, Technology Campus Parking and Site Improvements																																																																
A2140	Successful Bond Election	21d	01-Nov-13 A	03-Dec-13 A	v-13 A 03-Dec-13 A																																																																
A2150	Solicitation & Approval of Program Management Consultant	21d	01-Jun-14 A	01-Jul-14 A	01-Jun-14 A 01-Jul-14 A																																																																
A2160	Solicitation & Approval of Architects / Engineers	20d	22-Aug-14 A	24-Feb-15 A	22-Aug-14 A 24-Feb-15 A																																																																
A2170	Design Phase	282d	27-Apr-15 A	27-Sep-16 A	27-Apr-15 A 27-Sep-16 A																																																																
A2180	Solicitation & Approval of GMP	85d	01-Jun-16 A	27-Sep-16 A	01-Jun-16 A 27-Sep-16 A																																																																
A2190	Construction Phase 12 Mo Proposed - 12 Mo Actual	301d	15-Jul-16 A	01-Aug-17	15-Jul-16 A 01-Aug-17																																																																

Date	Revision	Checked	Approved



161018 - STC Bond Program - Master Program Schedule

DATE: 18-Oct-16

Activity ID	Activity Name	Original Duration	Start	Finish	2014 2015 2016 2017 2018																																																											
					2014												2015												2016												2017												2018											
					A	S	O	N	D	J	F	M	A	M	J	J	A	S	O	N	D	J	F	M	A	M	J	J	A	S	O	N	D	J	F	M	A	M	J	J	A	S	O	N	D	J	F	M	A	M	J	J	A	S	O	N	D							
A5220	TCO / Floor	0d		01-Jul-17*																																																												
A5230	Building FF&E Make Ready	44d	03-Jul-17	15-Aug-17																																																												
A5240	Final Completion for Move In	0d		15-Aug-17*																																																												
A5250	Faculty Start	0d	21-Aug-17*																																																													
A5260	Classes Begin	0d	28-Aug-17*																																																													
REGIONAL CENTER FOR PUBLIC SAFETY EXCELLENCE		949d	01-Nov-13 A	01-Feb-18																																																												
Regional Center for Public Safety Excellence (Project 24 -DG)		949d	01-Nov-13 A	01-Feb-18																																																												
A1300	Successful Bond Election	21d	01-Nov-13 A	03-Dec-13 A	v-13 A																																																											
A1310	Solicitation & Approval of Program Management Consultant	21d	01-Jun-14 A	01-Jul-14 A																																																												
A1320	Solicitation & Approval of Architects / Engineers	20d	01-Dec-15 A	01-Jun-16 A																																																												
A1330	Design Phase	157d	15-Aug-16 A	12-May-17																																																												
A1940	Solicitation of GMP	15d	14-Feb-17*	28-Feb-17																																																												
A1350	Construction Phase	217d	03-Apr-17*	01-Feb-18																																																												
LA JOYA CENTER		779d	01-Nov-13 A	15-Aug-17																																																												
La Joya Jimmy Carter Teaching Site (Project 26 -RG)		779d	01-Nov-13 A	15-Aug-17																																																												
A1240	Successful Bond Election	21d	01-Nov-13 A	03-Dec-13 A	v-13 A																																																											
A1250	Solicitation & Approval of Program Management Consultant	21d	01-Jun-14 A	01-Jul-14 A																																																												
A1260	Solicitation & Approval of Architects / Engineers	20d	27-Jan-15 A	20-Mar-15 A																																																												
A1270	Design Phase	194d	15-Feb-16 A	02-Jan-17																																																												
A5160	Solicitation of GMP	8d	06-Dec-16*	13-Dec-16																																																												
A1290	Construction Phase	127d	17-Feb-17*	15-Aug-17																																																												

Date	Revision	Checked	Approved



2013 Bond Construction Program Schedule

#	Projects	Board Approval GMP Schedule	Revised Dates as of 10/21/16		Target Dates as of 10/21/16	Construction Period	Revised Dates as of 10/21/16	Semester	STC Academic Timeline	
		Revised Schedule As of 8/3/16	Construction Start Date	Substantial Completion Date	Temp Cert. of Occupancy (TCO) Target Date		FFF Completion of FFE & Make Ready		Faculty Start Date	Classes Begin
Buildings , Expansions and Renovations										
<i>Pecan Campus</i>										
1	North Academic Building	06/28/16	8/3/2016	9/20/17	8/14/2017*	11 months	12/14/17	Spring 2018	1/15/2018*	1/22/2018*
2	South Academic Building	08/23/16	8/24/2016	9/15/2017	9/15/2017*	11 months	12/24/17	Spring 2018	1/3/2018*	1/22/2018*
3	STEM Building	08/23/16	8/24/2016	11/15/2017	11/15/2017*	15months	12/24/17	Spring 2018	1/3/2018*	1/22/2018*
4	Student Activities Building and Cafeteria	09/14/16	9/19/2016	12/20/2017	12/5/2017*	12 months	12/24/17	Spring 2018	1/3/2018*	1/22/2018*
<i>Mid-Valley Campus</i>										
5	Health Professions and Science Building	07/26/16	8/15/2016	8/22/2017	7/10/17*	12 months	8/15/2017	Fall 2017	8/21/2017*	8/28/2017*
6	Library Expansion	10/27/16	11/28/2016*	8/28/2017	7/3/17*	9 months	8/15/2017	Fall 2017	8/21/2017*	8/28/2017*
7	Student Services Building Expansion	07/26/16	8/01/2016	8/28/2017	7/3/17*	12 months	8/15/2017	Fall 2017	8/21/2017*	8/28/2017*
8	Workforce Training Center Expansion	10/27/16	10/22/2016*	8/28/2017	7/3/17*	10 months	8/15/2017	Fall 2017	8/21/2017*	8/28/2017*
<i>Starr County Campus</i>										
9	Health Professions and Science Building Partial GMP	07/26/16	8/15/2016	10/15/2017	7/02/2017*	12 months	8/15/2017	Fall 2017	8/21/2017*	8/28/2017*
	Health Professions and Science Building Package 2	09/27/16	10/3/2016							
10	Library	10/27/16	11/1/2016*	9/1/2017	7/17/2017*	10 months	8/15/2017	Early Fall 2017	8/21/2017*	8/28/2017*
11	Student Activities Building Expansion	11/21/16	11/22/2016*	9/1/2017	7/25/2017*	9 months	8/15/2017	Early Fall 2017	8/21/2017*	8/28/2017*
12	Student Services Building Expansion	11/04/16	11/7/2016*	9/1/2017	7/25/2017*	10 months	8/15/2017	Early Fall 2017	8/21/2017*	8/28/2017*
13	Workforce Training Center Expansion	10/27/16	11/1/2016	9/1/2017	7/25/2017*	10 months	8/15/2017	Early Fall 2017	8/21/2017*	8/28/2017*
<i>Nursing & Allied Campus</i>										
14	Campus Expansion Package 1	05/24/16	6/15/2016	12/1/2017	12/01/2017*	18 months	12/24/17	Spring 2018	1/3/2018*	1/22/2018*
	Campus Expansion Package 2	07/26/16	9/1/2016			15 months			1/3/2018*	1/22/2018*
<i>Technology Campus</i>										
15	Southwest Building Renovation Demolition Package	03/29/16	5/2016	8/15/2017	07/1/2017*	3 months	8/15/2017	Fall 2017	8/21/2017*	8/28/2017*
	Southwest Building Renovation Building Package	06/28/16	8/15/2016			12 months			8/21/2017*	8/28/2017*
<i>Regional Center for Public Safety Excellence</i>										
16	Training Facility	2/28/2017	4/3/2017*	2/1/2018		10 months		Summer 2018		
<i>La Joya Center</i>										
17	Training Labs Improvements	12/13/2016	2/17/2017*	8/15/2017		6 months		Fall 2017		
Thermal Plants										
18	Pecan Campus Thermal Plant Expansion	11/24/15	12/01/2015	10/30/2016		10 months		Fall 2016		
19	Mid Valley Thermal Plant	04/26/16	6/1/2016	3/27/2017		9 months		Spring 2017		
20	Starr County Thermal Plant	06/28/16	9/1/2016	7/3/2017		10 months		Fall 2017		
21	Nursing and Allied Health Campus Thermal Plant*	10/27/16	11/2016	9/2017		10 months		Fall 2017	1/3/2018	1/16/2018
Parking & Site Improvements										
22	Pecan Campus Parking and Site Improvements	09/23/16	11/1/2016*	9/1/2017		9 months		Fall 2017		
23	Mid Valley Campus Parking and Site Improvements	04/26/16	5/1/2016	8/8/2017		10 months		Fall 2017		
24	Starr County Campus Parking and Site Improvements Partial		11/1/2016*	9/1/2017		10 months		Fall 2017		
	Starr County Campus Parking and Site Improvements Package 2	10/27/16	11/1/2016*	9/1/2017		10 months				
25	Nursing and Allied Health Campus Parking and Site Improvements	10/27/16	11/2/2016*	11/1/2017		12 months		Spring 2018		
26	Technology Campus Parking and Site Improvements	06/28/16	7/15/2016	8/1/2017	7/1/17*	11 months	8/15/2017	Fall 2017	8/21/2017*	8/28/2017*
27	Regional Center for Public Safety Parking and Site Improvements									

Indicates date shown on B&A schedule but moved to November FCM
 Document prepared by College staff and based on master schedule timeline prepared by Broaddus & Associates

Update on Status of the 2013 Bond Construction Pecan Campus Thermal Plant

Broaddus & Associates has provided an update on the current status of the 2013 Bond Construction Pecan Campus Thermal Plant.

- Pecan Campus Thermal Plant Expansion Project has been at substantial completion by Broaddus and Associates as having achieved Certificate of Substantial Completion, with punch list of minor completion items remaining. Of 270 noted punch items, only 50 remain open, in various stages of correction, completion, or pending re-inspection. The Date of Substantial Completion, as approved and certified by Halff Associates, is determined to be December 16, 2016.
- The chillers and cooling towers are operational, and under control of Facilities personnel, however, the Testing and Balance agent is scheduled for week of January 16, 2017.
- Project Records and Closeout documents, including Operation and Maintenance Manuals, are submitted and under review by Engineer for completeness.
- Broaddus & Associates is working with Halff Associates and D. Wilson Construction Company to prepare a proposal for installation of the designed waves motif removed in the GMP negotiations process. The estimated cost of is expected to be \$85,000. When final, the proposal will be presented to the Board for approval, funded from buy out savings. This item of work is proposed to be accomplished prior to Final Completion.

Representatives from Broaddus & Associates, D. Wilson Construction, and Halff Associates will be present to answer any questions.

No action is requested.

Update on Status of the 2013 Bond Construction Regional Center for Public Safety Excellence Projects

Broaddus & Associates will be presenting an update on the current status of the 2013 Bond Construction Regional Center for Public Safety Excellence Projects

Background

On November 22, 2016, the Board of Trustees approved the 2013 Bond Construction Regional Center for Public Safety Excellence projects which included the new building and the parking and site improvements. The Board requested that Broaddus & Associates work with the City of Pharr and the Pharr-San Juan- Alamo Independent School District to find opportunities to reduce costs of the projects. Broaddus & Associates along with the project design teams have met with the representatives with the City of Pharr and PSJA ISD. Broaddus & Associates has provided the following updates:

Infrastructure and Site Improvements:

- Connecting the new sanitary sewer line to the existing PSJA ISD High School located north of the property
- Connecting the new fire line to the existing PSJA ISD fire loop
- Connecting the new water service to the existing 18" water service line along Cage Boulevard (HWY 281)
- City of Pharr will provide fill for the site grading

The City of Pharr along with the project team has recommended relocating the proposed detention ponds indicated in the Master Plan and Schematic Design to be relocated to the east of the proposed building. This change would allow for the natural drainage to flow east and decrease the depth of the ponds. This would also allow for less fill required under the new proposed building and parking since the existing natural grade is higher closer to Cage Blvd. This option should also result in reduced site improvement costs.

Presenters

Representatives from Broaddus & Associates, Dannebaun Engineering Company-McAllen, LLC, and PBK Architects will be present to answer any questions.

No action is requested.

Review and Recommend Action on Revised Schematic Design for the 2013 Bond Construction Regional Center for Public Safety Excellence Parking and Site Improvements

Approval of the revised schematic design by Dannebaum Engineering Company-McAllen, LLC. for the 2013 Bond Construction Regional Center for Public Safety Excellence Parking and Site Improvements project will be requested at the January 31, 2017 Board meeting.

Purpose

Schematic design is the first phase of basic design services provided by the project design team. In this phase, the design team prepares schematic drawings based on the Owner's project program and design meetings with staff. The approval of this phase is necessary to establish the basis on which the project design team is given authorization to proceed with design development and construction document phases.

Background

The schematic design was previously approved by the Board of Trustees on November 22, 2106. The current design includes detention ponds located at the west side of the property adjacent to Cage Boulevard (HWY 281). The project team has met with the City of Pharr and have concluded that the location of the detention ponds would function more efficiently and effectively on the east side of the proposed building and future buildings. The relocation of the ponds would allow the building and parking lot to be closer to Cage Blvd. which has advantages:

- Higher natural grade elevations
- Allowing for the drainage to flow towards the east which follows the natural grading
- Less fill required for the proposed building, future buildings, and proposed parking lots
- Allow for shallower detention pond depths

Reviewers

The proposed revised schematic design has been reviewed by Broaddus & Associates and staff from Facilities Planning & Construction

Enclosed Documents

Revised Schematic Design Layout for the Parking and Site Improvements

Presenters

Representatives from Dannebaum Engineering Company-McAllen, LLC. and Broaddus & Associates will be present at the Facilities Committee meeting to present the schematic design.

Recommended Action

It is requested that the Facilities Committee recommend for Board approval at the January 31, 2017 Board meeting, the proposed revised schematic design by Dannebaum Engineering Company-McAllen, LLC. for the 2013 Bond Construction Regional Center for Public Safety Excellence project as presented.



G:\1540\1945-01_STC_Parr_Campus\Sheets\vrml\master-2.dwg
 Layout: Tab: Layout1 (2) Date: Jan 11, 2017 - 11:10am Plotted By: JULIO MACIAS

Drawings provided by Dannenbaum
All questions will be answered by Dannenbaum Engineering



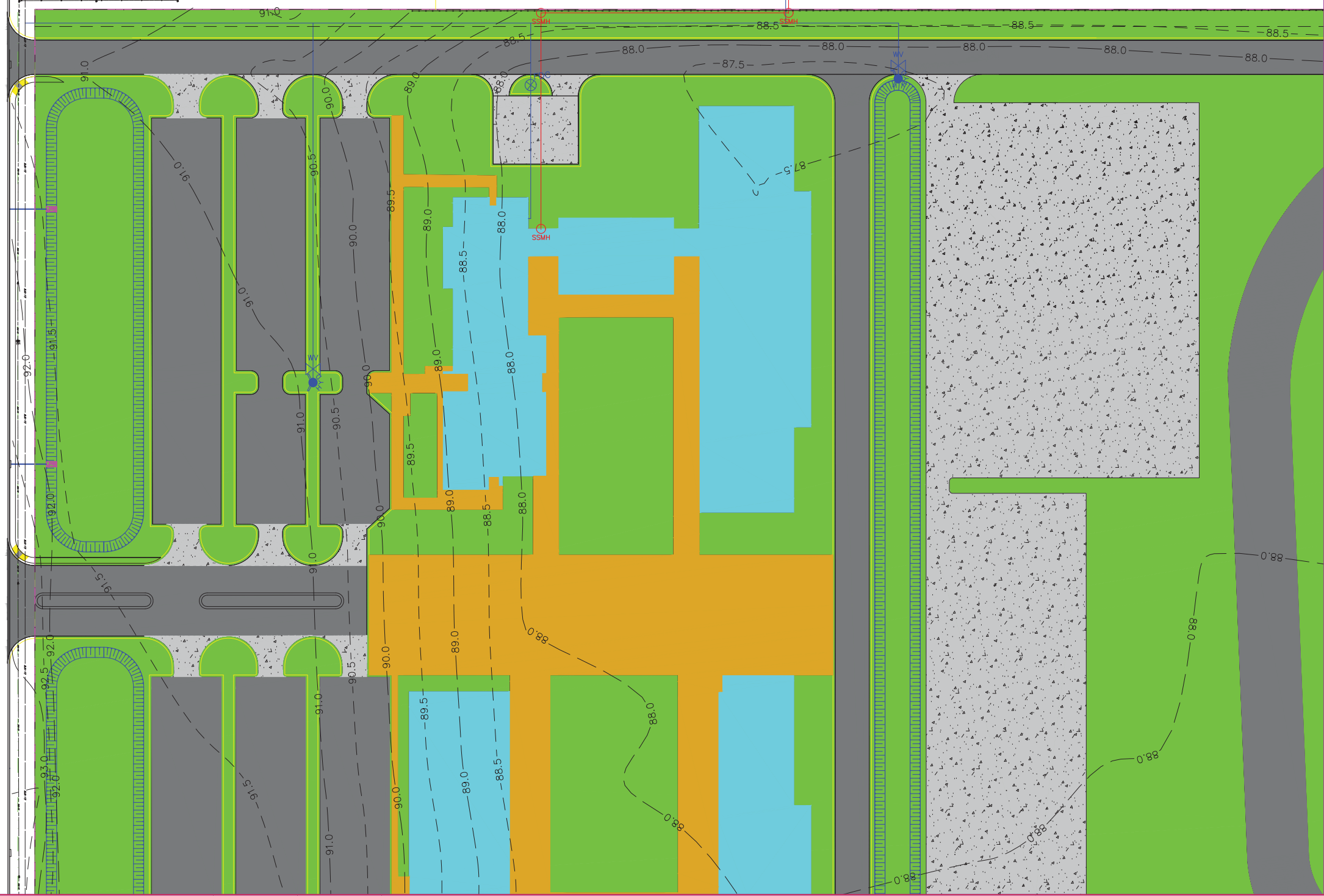
DANNENBAUM
 ENGINEERING COMPANY-McALLEN, LLC
 1109 Nolana Loop, Suite 208 McAllen, TX 78504 (956) 682-3677

SOUTH TEXAS COLLEGE/
 REGIONAL CENTER FOR
 PUBLIC SAFETY EXCELLENCE

Project No.:	
Designed By:	
Drawn By:	
Checked By:	
Sheet No.:	



**Drawings provided by Dannenbaum
All questions will be answered by Dannenbaum Engineering**



DANNENBAUM

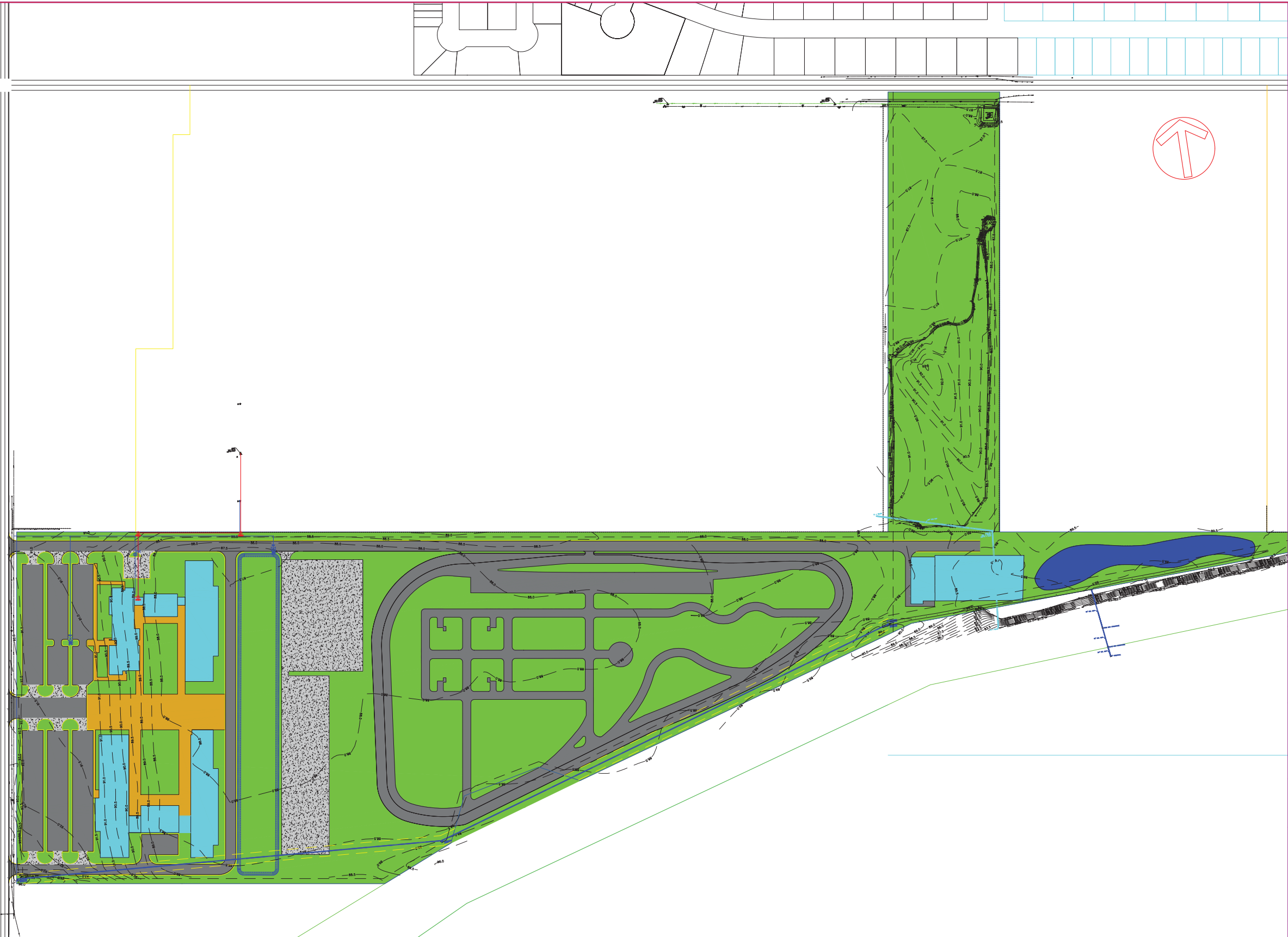
ENGINEERING COMPANY-McALLEN, LLC
1109 Nolana Loop, Suite 208 McAllen, TX 78504 (956) 682-3677

SOUTH TEXAS COLLEGE/
REGIONAL CENTER FOR
PUBLIC SAFETY EXCELLENCE

Project No.:
Designed By:
Drawn By:
Checked By:
Sheet No.:

G:\1540\1945-01_STC_Parr_Campus\Sheets\yren\master-2.dwg
Layout: Tab: Layout1 (3) Date: Jan 11, 2017 - 11:10am Plotted By: JULIO MACIAS

G:\1540\1945-01_STC_Parr_Campus\Sheets\yrn\master-Det_Pond_Shift.dwg
Layout1 (2) Date: Jan 11, 2017 - 11:10am Plotted By: JULIO MACIAS



Drawings provided by Dannenbaum
All questions will be answered by Dannenbaum Engineering

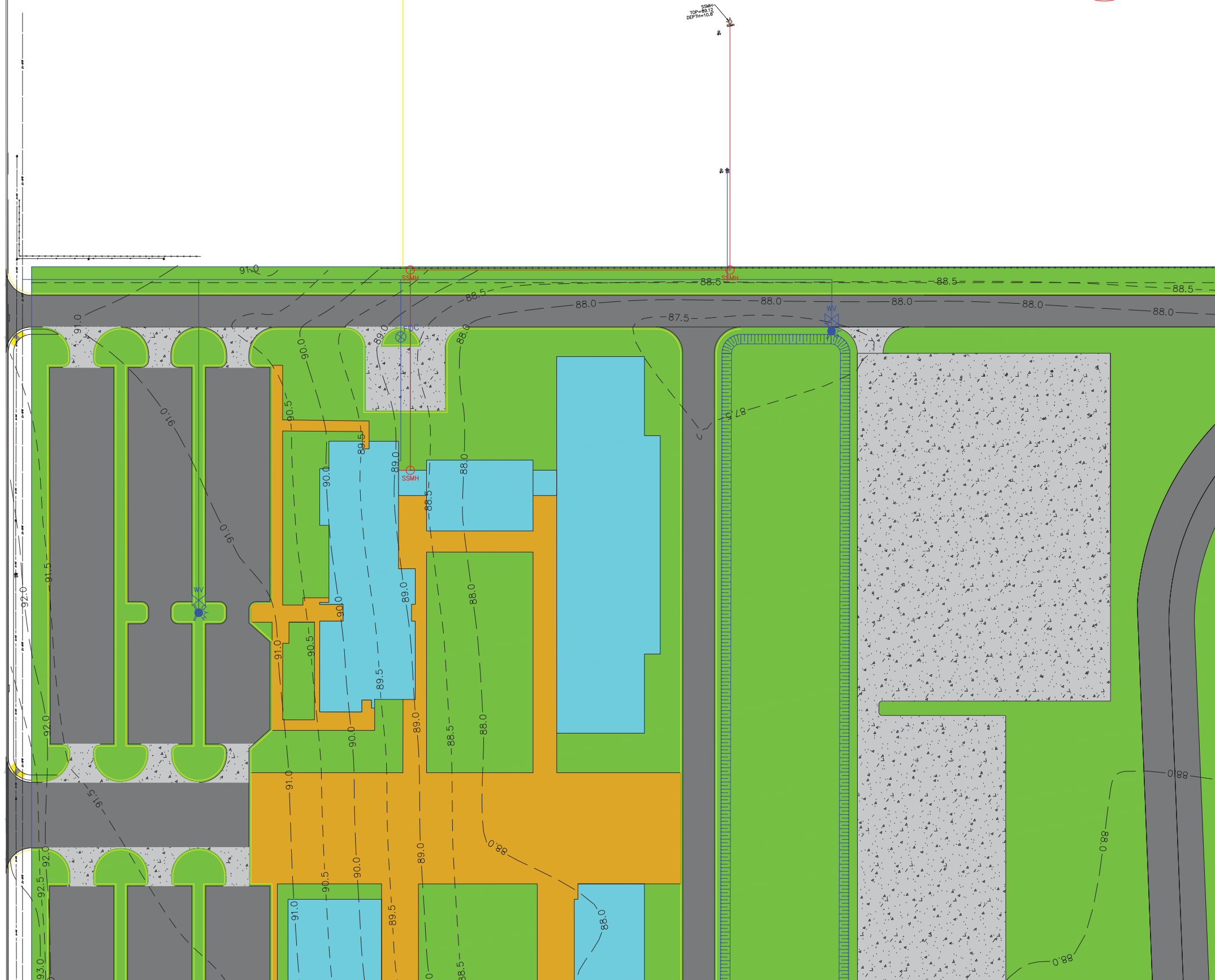
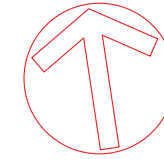


DANNENBAUM
ENGINEERING COMPANY-McALLEN, LLC
1109 Nolana Loop, Suite 208 McAllen, TX 78504 (956) 682-3677

SOUTH TEXAS COLLEGE/
REGIONAL CENTER FOR
PUBLIC SAFETY EXCELLENCE

Project No.:
Designed By:
Drawn By:
Checked By:
Sheet No.:

Drawings provided by Dannenbaum
All questions will be answered by Dannenbaum Engineering



G:\1540\1945-01_STC_Parr_Campus\Sheets\Level\master-Det_Pond_Shift.dwg
 Layout Tab: Layout1 Date: Jan 11, 2017 11:10am Plotted By: JULIAMCAS



DANNENBAUM

ENGINEERING COMPANY-McALLEN, LLC
 1109 Nolana Loop, Suite 208 McAllen, TX 78504 (956) 682-3677

SOUTH TEXAS COLLEGE/
 REGIONAL CENTER FOR
 PUBLIC SAFETY EXCELLENCE

Project No.:
 Designed By:
 Drawn By:
 Checked By:
 Sheet No.:

Review and Recommend Action on Substantial Completion for the 2013 Bond Construction Pecan Campus Thermal Plant

Approval of substantial completion for the following 2013 Bond Construction Pecan Campus Thermal Plant will be requested at the January 31, 2017 Board Meeting:

	Project	Substantial Completion	Documents Attached
1.	2013 Bond Construction Pecan Campus Thermal Plant Engineer: Halff Associates Construction Manager at Risk: D. Wilson Construction Company	Recommended	Certificate of Substantial Completion

Broaddus & Associates, Halff Associates, and college staff visited the site and developed a construction punch list. As a result of this site visit and observation of the completed work, the project was certified by the architect on December 16, 2016. A Certificate of Substantial Completion has been issued. Substantial Completion was accomplished within the time allowed in the Owner/Contractor agreement for this project. A copy of the Substantial Completion Certificate is enclosed.

Broaddus & Associates is working with Halff Associates and D. Wilson Construction Company to provide a quote for the installation of the wave material design that was removed during the GMP process. The cost and the proposed use of buy out savings needed for this item will be presented to the Board for approval. This work will be proposed to be done prior to Final Completion.

Recommended Action

It is recommended that the Facilities Committee recommend for Board approval at the January 31, 2017 Board meeting, substantial completion of the 2013 Bond Construction Pecan Campus Thermal Plant as presented.

Substantial Completion Acceptance

JAN 10 2017 AM 8:35

Project Name: STC Pecan Campus Thermal Plant Expansion
Project No.: _____ Date of Issuance: _____
Owner: South Texas College
Contractor: D. Wilson Construction Company
A/E Firm: Half Associates

Scope of Work Covered by This Acceptance:

STC Pecan Campus Thermal Plant Expansion
STC Pecan Campus Building E Expansion

Effective Date & Time of Acceptance: December 16, 2016

This constitutes the Owner's acceptance for Beneficial Occupancy: Yes No
OCIP Worker's Compensation will terminate within sixty (60) calendar days: Yes No Not OCIP

In accordance with the Uniform General and Supplementary General Conditions (UGC) of the Contract, this is to confirm the results of the substantial completion inspection(s). The "punch list(s)" of items remaining to be completed or corrected as of the effective date of this acceptance, is formally issued by the Architect under separate cover. It is expressly understood that the failure to include any items on such list(s) does not alter the responsibility of the Contractor to complete all Work in accordance with the Contract Documents. In accordance with the UGC, the Date of Substantial Completion is that Date jointly certified by the Architect/Engineer, Owner and Contractor that the Work is sufficiently completed for the Owner to utilize it, or designated portion thereof, for the intended purpose.

As of the effective date noted above, the Contractor is relieved of the responsibilities for utilities, maintenance, security, custodial services, and insurance coverage, which may pertain specifically to the Work, covered by this acceptance. The Contractor remains responsible; however, to maintain full insurance coverage as required by the Contract for any areas of the project not yet accepted, and such coverage as may be necessary for its employees and subcontractors while engaged in completion of the punch list items as identified above.

The Owner and A/E will continue to inspect the entire project, including the work accepted herein, until final completion and acceptance of all elements of the work. This inspection will cover such defects as may have been overlooked as well as the items currently remaining on the punch list(s). During the guarantee and warranty period, the Owner will directly notify the Contractor of other defects that may appear.

The **Contractor** shall complete/correct the items identified on the punch list(s) within 30 Calendar days from the Effective Date of this Acceptance.

Bill Wilson, President


Signature

1/9/17
Date

The **Architect/Engineer** agrees that the Work noted in this Acceptance is sufficiently complete to be used as intended.

Menton J. "Trey" Murray, III, PE, LEED AP
Vice- President


Signature

1/9/17
Date

With the exception of those items noted on the attached "punch list(s)", the **Owner** accepts the Work designated herein as Substantially Complete as of the Effective Date of this Acceptance.

Dr Shirley A Reed,
President

Signature

Date

**BROADDUS
& ASSOCIATES**

Review and Recommend Action on Substantial Completion for the Non-Bond Pecan Campus Building K Student Enrollment Center

Approval of substantial completion for the following non-bond Pecan Campus Building K Student Enrollment Center will be requested at the January 31, 2017 Board Meeting:

	Project	Substantial Completion	Documents Attached
1.	Pecan Campus Building K Student Enrollment Center Engineer: Boultinghouse Simpson Gates Architects Contractor: NM Contracting. LLC	Recommended	Certificate of Substantial Completion

Boultinghouse Simpson Gates Architects and college staff visited the site and developed a construction punch list. As a result of this site visit and observation of the completed work, the project was certified by the architect on January 10, 2017, and a Certificate of Substantial Completion was issued. Substantial Completion was accomplished within the time allowed in the Owner/Contractor agreement for this project. A copy of the Substantial Completion Certificate is enclosed.

Recommended Action

It is recommended that the Facilities Committee recommend for Board approval at the January 31, 2017 Board meeting, substantial completion of the Non-Bond Pecan Campus Building K Student Enrollment Center as presented.

Review and Recommend Action on Lease Agreement with La Joya Independent School District for the 2013 Bond Construction La Joya Jimmy Carter High School Teaching Center

Approval of the facility lease agreement with La Joya Independent School District for use by South Texas College for instructional use will be requested at the January 31, 2017 Board meeting.

Purpose

Authorization is being requested to approve the new facility lease agreement with the La Joya Independent School District to continue providing instructional facilities.

Justification

The lease is needed to accommodate programs with specific needs for the general classrooms, science labs, computer labs, welding lab, continuing education courses and Early College High School courses being offered at the La Joya Jimmy Carter High School facility.

Background

The Board of Trustees previously approved the current facility lease agreement on August 25, 2015 as part of the La Joya Jimmy Carter Early College High School program. Existing furniture and equipment has been used since 2010.

The new lease agreement incorporates the new renovation areas for classrooms, science labs, science prep rooms, science storage rooms, computer labs and a new outdoor welding lab. The renovations of the interior spaces and the new welding lab are part of the 2013 Bond Construction La Joya Jimmy Carter Teaching Center project. In addition, new furniture and equipment will be provided for these spaces.

The College’s legal counsel has worked with College staff, and Broaddus & Associates to prepare the lease agreement which is pending final review by La Joya ISD staff.

Staff recommends approval to the lease agreement as noted below.

Facility	Lease Term	Term Requested	Lease Cost
La Joya ISD – Jimmy Carter High School – Classrooms, Science Labs, Science Prep Rooms, Science Storage Rooms, Computer Labs, Welding Lab, Library and Parking Lot	5 years	August 15, 2017 to August 14, 2022	\$1 annually

Funding Source

Funds for these expenditures are budgeted in the facility lease budget for FY 2016-2017.

Recommended Action

It is requested that the Facilities Committee recommend Board approval at the January 31, 2017 Board meeting, of the new facility lease agreement with La Joya Independent School District for use of instructional facilities for the 2013 Bond Construction La Joya Jimmy Carter High School Teaching Center facility for the period, subject to final review by La Joya ISD, as presented.

Review and Recommend Action on Renewal of Facility Lease Agreements

Approval of the facility lease agreements for use by South Texas College for instructional use will be requested at the January 31, 2017 Board meeting.

Purpose

Authorization is being requested to renew the current facility lease agreements with the Pharr-San Juan-Alamo Independent School District to continue providing instructional facilities and with the El Milagro Clinic and City of McAllen to continue providing parking at the Nursing and Allied Health Campus adjacent to the El Milagro Clinic.

Justification

The continuation of these leases are needed to accommodate programs with specific needs for the construction science, law enforcement, and fire science courses being offered and for providing eighty (80) parking spaces at the Nursing and Allied Health Campus.

Background

The Board of Trustees previously approved these facility leases.

At the August 25, 2015 Board meeting, the Board approved the renewal of the lease agreement with the PSJA ISD for use of the CCTA and Ballew High School for instructional use. The South Texas College staff would like to continue to use this facility.

At the September 23, 2014 Board meeting, the Board approved the lease agreement with the El Milagro Clinic and the City of McAllen to use the parking facility adjacent to the El Milagro Clinic. The South Texas College Nursing and Allied Health staff would like to continue to use this parking facility.

Staff recommends approval to renew these lease agreements as noted below.

Facility	Renewals in Contract	Renewal Requested	Lease Cost
PSJA ISD – CCTA and Ballew High School – Classrooms, Science Labs, Electronic Lab, Welding Lab and Staff Offices	4 – one year renewals	2nd August 15, 2016 to August 14, 2017	\$1 annually plus prorated cost of security, custodial, and utilities
El Milagro Clinic and City of McAllen	1 - two year renewals	1st October 20, 2016 to October 19, 2018	\$1,250 per year

Funding Source

Funds for these expenditures are budgeted in the facility lease budget for FY 2016-2017.

Recommended Action

It is requested that the Facilities Committee recommend Board approval at the January 31, 2017 Board meeting, the renewal of the current facility lease agreements with Pharr-San Juan-Alamo Independent School District for use of instructional facilities and the El Milagro Clinic and the City of McAllen for the parking facility for the periods as presented.

Review and Discussion of Proposed Gun Free Zones

During the 84th session of the Texas Legislature, Senate Bill 11 provided for the concealed carrying of handguns, by license holders, on college and university campuses, including South Texas College. The bill was passed into law, and while it took effect for universities on August 1, 2016, SB 11 specifically postponed the effective date for public junior colleges until August 1, 2017.

General Requirements of SB 11:

Concealed Carrying of Handguns on College Campuses

SB 11 explicitly stated that colleges may not prohibit license holders from carrying handguns on campus generally, although specific provisions may be made to prohibit the carrying of handguns by license holders at specific locations, as necessary for campus safety.

Reasonable Rules, Regulations, or Other Provisions Enacted by an Institution

SB 11 established a procedure by which the College was required to consult with students, staff, and faculty regarding the specific safety considerations, at which time the College President is authorized to establish “reasonable rules, regulations, or other provisions regarding the carrying of concealed handguns by license holders...” Under SB 11, the Board has the authority, by 2/3 vote, to amend any rules established by the President.

Publication and Reporting of any Rules, Regulations, or Other Provisions Established

SB 11 further established that any such rules must be distributed to the institutions’ students, faculty, and staff, including publication on the website.

Furthermore, the College is required to regularly report any rules, regulations, or other provisions that it adopts, as well as explanation of the adoption of such rules, to a committee of the Texas Legislature.

South Texas College Campus Carry Action Plan:

Mr. Paul Varville, Chief Administrator for the Department of Public Safety, has led the task force that developed and is carrying out the *South Texas College Campus Carry Action Plan*, which was developed to comply with the requirements of SB11.

The Campus Carry Task Force membership roster and their timeline to develop and implement the action plan are included in the following pages.

The Task Force identified the following activities toward the implementation of Campus Carry at South Texas College:

Completed Steps

- Development of a campus website to provide information on Campus Carry
- Communication with the college about the website and other resources
- Ongoing Web Survey requesting stakeholder recommendations for gun free zones
- Campus Forums with students, faculty, and staff
 - Forums were advertised to all students, faculty, and staff.
 - Forums were open to all, and held at each campus
 - 163 students and 134 employees participated, district wide:

<u>Campus</u>	<u>Student</u>	<u>Faculty/Staff</u>	<u>Total</u>
Pecan	37	60	97
Nursing & Allied Health	12	26	38
Technology	48	47	95
Mid Valley	32	35	67
Starr County	78	21	99
Total:	207	189	396

- Review of Campus Forum and Survey responses with administrative staff
- Task force review of recommendations gathered at forums
- Presentation of preliminary recommendations at additional campus forums
- Further review of recommended gun free zones with administrative staff
- President’s review of Task Force Recommendations

Next Steps

- Board review of President’s Recommendations
- Board Action as necessary on Gun Free Zones
- Continued communication with campus stakeholders

As the Task Force moves forward, the website will continue to be updated to give all stakeholders a place for accurate information related to this important process.

Texas Attorney General Opinion Regarding Gun Free Zones:

Texas Attorney General Ken Paxton issued an opinion, KP-0120, regarding the authority of a community college to prohibit the carrying of concealed handguns in classrooms or other areas where minors attend class or are routinely present.

Excerpts of KP-0120 include:

- “A junior or community college may not categorically prohibit concealed handguns from the junior or community college campus.”

- “A junior or community college may not adopt a blanket prohibition against concealed handguns in all of its classrooms merely because minors may attend or be present in any or all classrooms.”
- “Nothing in S.B. 11 expressly excepts from the concealed carry authorization areas of a campus of an institution of higher education in which minors may congregate.”
- “We cannot conclude the Legislature intended section 46.03 to impose a general prohibition against firearms and other weapons from a location, particularly college campuses, due to the mere presence of minors.”
- “This is especially true given that the Legislature has not prohibited in that section firearms in a number of locations where minors may congregate, such as shopping malls, movie theaters, museums, and music venues.”

“Gun Free Zone” Recommendations as of January 2017:

Currently, the Task Force has recommended the following “Gun Free Zones” at South Texas College, pending further discussion and review with the President and the Board. Each recommended zone is supported by the cited statutes as a place at which the concealed carrying of handguns by license holders may be prohibited.

Restricted Gun Free Zone

Legal Basis

- | | |
|--|---|
| 1. Early College High School - Pecan Campus | Texas Penal Code Section 46.03 (1) |
| 2. Sporting Events on Premises – MVC
Wellness CTR | Texas Penal Code Section 46.035 (b) (2) |
| 3. Counseling Offices | Texas Govt. Code Section 411.2031 (d-1) |
| 4. Child Development Center | Texas Govt. Code Section 411.2031 (d-1) |
| 5. Areas with chemicals or pressurized gas | Texas Govt. Code Section 411.2031 (d-1) |
| 6. Testing Center - Pecan Plaza | Texas Govt. Code Section 411.2031 (d-1) |
| 7. Temporary Events | Texas Penal Code Section 46.035 (a-3) |
| A. Hearings, Mediations, Disciplinary
Sessions | Texas Penal Code Section 46.035 (a-3) |
| B. Board Meetings | Texas Penal Code Section 46.035 (c) |
| C. Intramural Fields | Texas Govt. Code Section 411.2031 (d-1) |
| D. Graduation Ceremonies | Texas Govt. Code Section 411.2031 (d-1) |
| E. Polling Locations | Texas Penal Code Section 46.03 (2) |

The legal basis provided for each Gun Free Zone listed is included in the following pages for your information and review.

Administration is also reviewing existing policies and will propose revisions and/or new policies as necessary to comply with state law and to establish gun free zones.

No action is requested at this time.

Campus Carry Task Force Membership



Finance and Administrative Services

- Paul Varville, Chief Administrator, Department of Public Safety
- Ruben Suarez, Police Lieutenant
- George McCaleb, Director of Facilities Operation and Maintenance
- Leslie Castaneda, Police Compliance Coordinator

Student Affairs and Enrollment Management

- Paul Hernandez, Dean of Student Affairs
- Eli Nguma, Director of Student Activities and Wellness
- Santa Pena, Director of Counseling
- Student Government Association President and Student Representative from Each Campus

Academic Affairs

- Margarita Vanguelova, CADD Faculty – BT Division
- Veronica Rodriguez, Child Development Chair – LASS Division
- Oscar Rodriguez, Chemistry Faculty – MSB Division
- Dr. Robert Gonzalez, EMT Program Chair – NAH Division
- William Greene, Political Science Faculty - Faculty Senate
- Amanda Barron, Student Success Specialist – Mid-Valley Campus
- Oscar Garza, Criminal Justice Faculty - Starr County Campus
- Sofia Pena, Director of Early College High Schools

Information Services Planning and Strategic Initiatives

- Minerva Alvarez, Librarian
- Belinda Torres, Coordinator of Learning Support
- Monica Alaniz, Qualitative Researcher

Continuing Education

- Lorena Trevino, Continuing Education Operations Officer

Public Relations and Marketing

- Daniel Ramirez, Director of Public Relations and Marketing

Grant Development, Management and Compliance

- Samantha Uriegas, Grants/Contr Compliance Officer



SOUTH TEXAS COLLEGE CAMPUS CARRY TIMELINE FOR 2016 -2017



References to Texas Government Code and Texas Penal Code

Texas Penal Code Section 46.03 (1) - Early College High School - Pecan Campus

Sec. 46.03. PLACES WEAPONS PROHIBITED. (a) A person commits an offense if the person intentionally, knowingly, or recklessly possesses or goes with a firearm, illegal knife, club, or prohibited weapon listed in Section [46.05](#)(a):

(1) on the physical premises of a school or educational institution, any grounds or building on which an activity sponsored by a school or educational institution is being conducted, or a passenger transportation vehicle of a school or educational institution, whether the school or educational institution is public or private, unless:

(A) pursuant to written regulations or written authorization of the institution; or

(B) the person possesses or goes with a concealed handgun that the person is licensed to carry under Subchapter H, Chapter [411](#), Government Code, and no other weapon to which this section applies, on the premises of an institution of higher education or private or independent institution of higher education, on any grounds or building on which an activity sponsored by the institution is being conducted, or in a passenger transportation vehicle of the institution;

Texas Penal Code Section 46.035 (b) (2) - Polling Locations

Sec. 46.03. PLACES WEAPONS PROHIBITED. (a) A person commits an offense if the person intentionally, knowingly, or recklessly possesses or goes with a firearm, illegal knife, club, or prohibited weapon listed in Section [46.05](#)(a):

(2) on the premises of a polling place on the day of an election or while early voting is in progress;

References to Texas Government Code and Texas Penal Code

Texas Govt. Code Section 411.2031 (d-1) - Counseling Offices; Child Development Center; Areas with chemicals or pressurized gas; Testing Center - Pecan Plaza; Intramural Fields; and Graduation Ceremonies

Sec. 411.2031. CARRYING OF HANDGUNS BY LICENSE HOLDERS ON CERTAIN CAMPUSES.

(d-1) After consulting with students, staff, and faculty of the institution regarding the nature of the student population, specific safety considerations, and the uniqueness of the campus environment, the president or other chief executive officer of an institution of higher education in this state shall establish reasonable rules, regulations, or other provisions regarding the carrying of concealed handguns by license holders on the campus of the institution or on premises located on the campus of the institution. The president or officer may not establish provisions that generally prohibit or have the effect of generally prohibiting license holders from carrying concealed handguns on the campus of the institution. The president or officer may amend the provisions as necessary for campus safety. The provisions take effect as determined by the president or officer unless subsequently amended by the board of regents or other governing board under Subsection (d-2). The institution must give effective notice under Section 30.06, Penal Code, with respect to any portion of a premises on which license holders may not carry.

Texas Penal Code Section 46.035 (a-3) - Hearings and Disciplinary Sessions

Sec. 46.035. UNLAWFUL CARRYING OF HANDGUN BY LICENSE HOLDER.

(a-3) Notwithstanding Subsection (a) or Section [46.03](#)(a), a license holder commits an offense if the license holder intentionally carries a concealed handgun on a portion of a premises located on the campus of an institution of higher education in this state on which the carrying of a concealed handgun is prohibited by rules, regulations, or other provisions established under Section [411.2031](#)(d-1), Government Code, provided the institution gives effective notice under Section [30.06](#) with respect to that portion.

References to Texas Government Code and Texas Penal Code

Texas Penal Code Section 46.035 (c) – Board Meetings

Sec. 46.035. UNLAWFUL CARRYING OF HANDGUN BY LICENSE HOLDER.

(c) A license holder commits an offense if the license holder intentionally, knowingly, or recklessly carries a handgun under the authority of Subchapter H, Chapter 411, Government Code, regardless of whether the handgun is concealed or carried in a shoulder or belt holster, in the room or rooms where a meeting of a governmental entity is held and if the meeting is an open meeting subject to Chapter 551, Government Code, and the entity provided notice as required by that chapter.

Texas Penal Code Section 46.03 (2) - Sporting Events on Premises – MVC Wellness CTR

Sec. 46.035. UNLAWFUL CARRYING OF HANDGUN BY LICENSE HOLDER.

(b) A license holder commits an offense if the license holder intentionally, knowingly, or recklessly carries a handgun under the authority of Subchapter H, Chapter [411](#), Government Code, regardless of whether the handgun is concealed or carried in a shoulder or belt holster, on or about the license holder's person:

(2) on the premises where a high school, collegiate, or professional sporting event or interscholastic event is taking place, unless the license holder is a participant in the event and a handgun is used in the event;

Update on Status of Non-Bond Construction Projects

The Facilities Planning and Construction staff prepared the attached design and construction update. This update summarizes the status of each capital improvement project currently in progress. Mary Elizondo and Rick de la Garza will be present to respond to questions and address concerns of the committee.

CONSTRUCTION PROJECTS PROGRESS REPORT - January 10, 2017

Project number	PROJECT DESCRIPTION	Project Development			Design Phase			Solicitation of Proposals			Construction Phase					Architect/Engineer	Contractor			
		Project Development	Contract Negotiations	Board approval of A/E	Concept Development	Schematic Approval	30%	60%	95%	100%	Solicit of Proposals	Approve Contractor	Construction Start	30%	50%			75%	95% Substantial Comp	100%
Pecan Campus and Pecan Plaza																				
15-1-006	Pecan - Library Study Rooms Additions																	Robert	N/A	TBD
15-1-007	Pecan - Infrastructure for Portable Buildings - Phase II																	Robert	Sigma HN Engineering	Z/ro Electric
15-1-007	Pecan - Building K Enrollment Center																	David	Boulinghouse Simpson Gates Architects	NM Contracting
15-1-008	Pecan - Arbor Brick Columns Repair & Replacement (RR)																	David	N/A	5 Star Construction
16-1-004	Pecan - Library Compact Shelving & Furniture																	Robert	Library Staff	
16-1-014	Pecan - Sand Volleyball Courts																	David		
16-1-001	Pecan - Building A Sign Replacement (RR)																	Robert	Public Relations	
15-1-001	Pecan Plaza - GED Entrance and Office Area Improvements																	Robert	M&O	
15-1-003	Pecan Plaza - Emergency Generator and Wiring																	Sam	DBR Engineering	TBD
16-1-016	Pecan Plaza - Parking Area for Police Vehicles																	David	R. Gutierrez Engineering	TBD
	Pecan Plaza - Renovation - Music Practice Rooms																	Robert	FPC	O&M
	Pecan - G Fume Hoods - Phase II																	Robert	Sigma HN Engineering	NM Contracting
Mid Valley Campus																				
16-2-007	MV - Covered Walkway for Building G																	Sam	Jon hold	TBD
Technology Campus																				
15-3-004	TC - Building B Doors and Frame Replacement																	Robert	ROFA	NM Contracting
15-3-006	TC - GM Car Storage Area Upgrade																	David	R Gutierrez Engineers	Robt Excavating, Inc.
15-3-014	TC - Workforce Building Conference Room																	Robert	ROFA	NM Contracting
16-2-011	TC - Ford Lab Exhaust System																	Sam	TBD	TBD
15-3-002	TC - Building D Exterior Metal Siding Repairs (RR)																	Sam	N/A	TBD
15-3-003	TC - Repair Concrete Floor Mechanical Room (RR)																	David	CLH Engineering	TBD
15-3-003	TC - Building B Concrete Floor Repairs (RR)																	David	CLH Engineering	TBD
16-2-013	TC - Building B Domestic Fire Sprinkler Lines (RR)																	Sam	Half Associates	TBD
Nursing and Allied Health Campus																				
16-4-016	NAH - Resurface Parking Lot #2 (RR)																	Robert	PCE	Mid Valley Paving
Starr County Campus																				
15-5-005	Starr - Building E & J Crisis Mgt Center Generator																	Sam	DBR Engineering	TBD
16-4-018	Starr - Building F Site Grading & Sidewalk Replacement(RR)																	Sam	Meiden and Hunt	TBD
District Wide Improvements																				
15-6-003	DW - Automatic Doors Phase III																	Robert	TBD	TBD
14-6-010	DW - Building to Building ADA Compliance Ph II																	Robert	Damenbaum Engineering	TBD
14-6-013	DW - La Joya Monument Sign																	David	N/A	TBD
14-6-014	DW - Marker Boards Replacement (RR)																	Sam	N/A	TBD
15-6-001	DW - Outdoor Furniture																	Rick	N/A	TBD
15-6-002	DW - Directional Signage																	David	N/A	TBD
16-6-017	DW - Surveillance Cameras & Poles Campus Entrances																	David	DPS	TBD
16-6-019	DW - Walkway LED Lighting Upgrade Ph I (RR)																	Rick	M&O	TBD

For FY 2016-2017, 25 non-bond projects are currently in progress, 6 have been completed and 40 pending start up - 71 Total

Status of Non-Bond Construction Projects in Progress December 2016

Project	% Complete	Date to Complete	Current Activity	Original Budget	Contract Amount	Comparison to Budget	Amount Paid	Contract Balance
Library Additional Study Rooms	15%	April 2017	1. Construction Phase 2. Bidding in Progress	\$ 54,000.00	TBD	TBD	\$ -	TBD
Infrastructure for Relocation of Portable Buildings-Phase II	100%	August 2016	1. Construction Phase 2. Construction Complete	\$ 350,000.00	\$ 372,337.93	\$ (22,337.93)	\$ 372,337.93	\$ -
Student Services Building K Enrollment Center	50%	January 2017	1. Construction Phase 2. Construction in Progress	\$ 490,000.00	\$ 413,431	\$ 76,568.52	\$ 266,498.66	\$ 146,932.82
Arbor Brick Columns Repair and Replacement	5%	July 2017	1. Construction Phase 2. Construction in Progress	\$ 20,000.00	TBD	TBD	\$ -	TBD
Library Compact Shelving and Furniture	85%	April 2017	1. Construction Phase 2. Bidding in Progress	\$ 400,000.00	\$ 394,652.08	\$ 5,347.92	\$ 394,652.08	\$ -
Sand Volleyball Courts	10%	May 2017	1. Project Development 2. Design in Progress	\$ 50,000.00	TBD	TBD	\$ -	TBD
Building A Sign Replacement	75%	July 2017	1. Design Phase 2. Design in Progress	\$ 10,000.00	TBD	TBD	\$ -	TBD
Pecan Plaza GED Entrance and Office Area Improvements	100%	August 2016	1. Construction Phase 2. Construction Complete	\$ 70,000.00	\$ 9,624.62	\$ 60,375.38	\$ 9,624.62	\$ -
Pecan Plaza Police Department Emergency Generator	5%	October 2016	1. Design Phase 2. Design in Progress	\$ 40,000.00	\$ 36,000.00	\$ 4,000.00	\$ -	\$ 36,000.00
Pecan Plaza Parking Area for Police Vehicles	5%	July 2017	1. Construction Phase 2. Construction in Progress	\$ 250,000.00	TBD	TBD	\$ -	TBD
Pecan Campus Total				\$ 1,759,000.00	\$ 1,226,046.11	\$ 123,953.89	\$ 1,043,113.29	\$ 182,932.82

Project	% Complete	Date to Complete	Current Activity	Original Budget	Contract Amount	Comparison to Budget	Amount Paid	Contract Balance
Mid Valley Campus								
Covered Walkway for Building G	10%	August 2017	1. Project Development 2. Design in Progress	\$ 12,000.00	TBD	TBD	\$ -	TBD
Mid Valley Campus Total				\$ 12,000.00	\$ -	\$ -	\$ -	\$ -
Technology Campus								
Building B Main Door and Frame Replacement	90%	January 2017	1. Construction Phase 2. Construction in Progress	\$ 50,000.00	\$ 37,133.00	\$ 12,867.00	\$ -	\$ 37,133.00
GM Car Storage Area Upgrade	80%	February 2017	1. Construction Phase 2. Construction in Progress	\$ 275,000.00	\$ 262,500.00	\$ 12,500.00	\$ -	\$ 262,500.00
Building C Conference Room Addition	90%	January 2017	1. Construction Phase 2. Construction in Progress	\$ 60,000.00	\$ 77,767.00	\$ (17,767.00)	\$ -	\$ 77,767.00
Ford Lab Exhaust System	5%	January 2017	1. Project Development 2. Design in Progress	\$ 100,000.00	TBD	TBD	\$ -	TBD
Building D Exterior Metal Siding Repairs	75%	January 2017	1. Project Development 2. Design in Progress	\$ 25,000.00	TBD	TBD	\$ -	TBD
Repair Concrete Floor Mechanical Room	30%	January 2017	1. Design Phase 2. Design in Progress	\$ 1,000.00	\$ 1,000.00	\$ -	\$ -	\$ 1,000.00
Building B Concrete Floor Repairs	0%	February 2017	1. Construction Phase 2. Bidding in Progress	\$ 10,000.00	\$ 4,750.00	\$ 5,250.00	\$ -	\$ 4,750.00
Building B Domestic/Fire Sprinkler Lines	90%	January 2017	1. Design Phase 2. Design in Progress	\$ 700,000.00	TBD	TBD	\$ -	TBD
Technology Campus Total				\$ 1,221,000.00	\$ 383,150.00	\$ 12,850.00	\$ -	\$ 383,150.00
Nursing and Allied Health Campus								
Resurface Parking Lot 2	100%	July 2016	1. Construction Phase 2. Construction Complete	\$ 250,000.00	\$ 98,367.30	\$ 151,632.70	\$ 98,367.30	\$ -
Nursing and Allied Health Campus Total				\$ 250,000.00	\$ 98,367.30	\$ 151,632.70	\$ 98,367.30	\$ -

Project	% Complete	Date to Complete	Current Activity	Original Budget	Contract Amount	Comparison to Budget	Amount Paid	Contract Balance
Starr County Campus								
Bldg E & J Crisis Management Center with Generator	30%	February 2017	1. Design Phase 2. Design in Progress	\$ 40,000.00	\$ 36,000.00	\$ 4,000.00	\$ -	\$ 36,000.00
Bldg F Site Grading and Sidewalk Replacement	5%	February 2017	1. Design Phase 2. Design in Progress	\$ 1,500.00	\$ 7,755.00	\$ (6,255.00)	\$ -	\$ 7,755.00
Starr County Campus Total				\$ 41,500.00	\$ 43,755.00	\$ (2,255.00)	\$ -	\$ 43,755.00
District Wide								
Automatic Doors Phase III	5%	November 2016	1. Construction Phase 2. Construction in Progress	\$ 65,000.00	TBD	TBD	\$ -	TBD
Building to Building ADA Accessibility Improvements Phase	100%	September 2016	1. Construction Phase 2. Construction Complete	\$ 400,000.00	\$ 468,170.04	\$ (68,170.04)	\$ 468,170.04	\$ -
La Joya Monument Sign	100%	August 2016	1. Construction Phase 2. Bidding in Progress	TBD	TBD	TBD	TBD	TBD
Marker Boards Replacement	50%	February 2017	1. Design Phase 2. Design in Progress	\$ 200,000.00	TBD	TBD	TBD	TBD
Outdoor Furniture	0%	January 2017	1. Design Phase 2. Design in Progress	\$ 25,000.00	TBD	TBD	TBD	TBD
Directional Signage Updates	50%	October 2016	1. Construction Phase 2. Construction in Progress	\$ 50,000.00	TBD	TBD	TBD	TBD
Surveillance Cameras and Poles Campus Entrances	50%	January 2017	1. Construction Phase 2. Bidding in Progress	\$ 203,000.00	\$ 158,020.00	\$ 44,980.00	\$ -	\$ 158,020.00
Walkway LED Lighting Upgrade	50%	July 2017	1. Construction Phase 2. Construction in Progress	\$ 25,000.00	\$ 17,730.10	\$ 7,269.90	\$ -	\$ 17,730.10
District Wide Total				\$ 968,000.00	\$ 643,920.14	\$ (15,920.14)	\$ 468,170.04	\$ 175,750.10
Non-Bond Construction Project Total				\$ 4,251,500.00	\$ 2,395,238.55	\$ 270,261.45	\$ 1,609,650.63	\$ 785,587.92
For FY 2016 - 2017, 31 non-bond projects are currently in progress, 5 have been completed and 34 pending start up - 70 Total								